



**RALEIGH  
LITTLE  
THEATRE**



**2025/2026  
SEASON**

# Moonlight



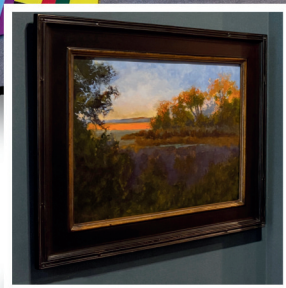
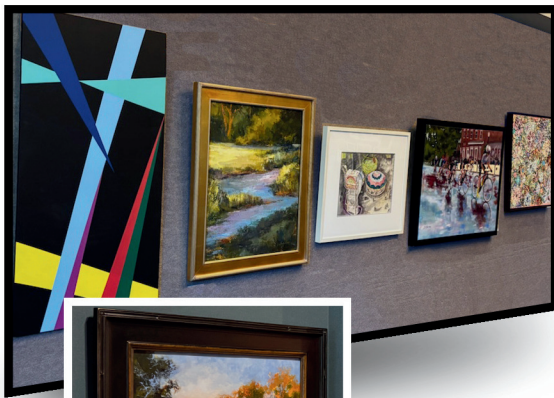
# Magnolias

By Ron Hutchinson

**FEBRUARY 6 - 22**

# Spotlights, + Brushesrokes

The Arts are Exploding at Raleigh Little Theatre!



Now, in addition to the incredible **art on stage**, enjoy the wealth of fine art on our lobby walls and in display cases.

Curated by local artists **Jean Corbett**, **Eileen Hendren**, and **Scott Jamison**, the exhibit features original pottery, landscapes, still lifes, abstracts, and much more from **award-winning local talents**.

**All art is available for purchase**

Scan here  
for details  
and purchase  
information.



GlenwoodFineArt.com  
20 Glenwood Ave. Raleigh  
**Glenwood Fine Art**



RALEIGH  
LITTLE  
THEATRE

presents

Moonlight <sup>a</sup> <sup>n</sup> <sup>d</sup>  
Magnolias

**BY RON HUTCHINSON**

Directed by Betsy Henderson

Scenic Design by Dennis R. Berfield

Costume Design by Elspeth McClanahan

Fight Direction by Montgomery Davis

Lighting Design by Thomas Matrajek

Sound Design by Jared Rivera

Props Design by Richard "Doc" Price

Stage Management by Chris Berg

*Moonlight and Magnolias* is presented by special arrangement  
with Broadway Licensing, LLC, servicing the Dramatists Play  
Service collection. ([www.dramatists.com](http://www.dramatists.com))

*Moonlight and Magnolias* was originally produced in New York City by  
the Manhattan Theatre Club on March 3, 2005, Lynn Meadow, Artistic  
Director; Barry Grove, Executive Producer. The World Premiere was  
produced by The Goodman Theatre, Chicago, Illinois on May 15, 2004,  
Robert Falls, Artistic Director; Roche Schulfer, Executive Director.

**ANY VIDEO AND/OR AUDIO RECORDING  
OF THIS PROGRAM IS PROHIBITED.**



“In the olden days we crossed  
oceans for discovery.  
Now one need only subscribe,  
and new worlds arrive monthly  
at the door.” – *Sir Walter Raleigh*

WALTER 



SUBSCRIBE  
TODAY

# Sponsors

---

Thanks to our media sponsor, Walter Magazine.



This program is funded in part by the City of Raleigh based on recommendations of the Raleigh Arts Commission.



*Moonlight and Magnolias* is supported by United Arts Wake County, as well as the N.C. Arts Council, a division of the Department of Natural and Cultural Resources.



@RLT1936

Special thanks to David Watts for website maintenance.

# Welcome to the Gaddy-Goodwin Theatre

---

What does it take to make something truly extraordinary?  
Legendary. Epic. Unforgettable.

*Moonlight and Magnolias* takes us into the high-pressure world of film during 1939 where *Gone with the Wind* was trying to take shape. Based on real events, the script nods to familiar Hollywood archetypes of the era including the big egos, ambition and the appetite for risk.

Anyone who has been in a collaborative process knows it is never a straight line. It is messy, full of friction, and there is never enough time, but with persistence and a shared goal, something special can happen. That is what is at the heart of this play. Believing something matters enough to get right and finding collaborators who feel the same. I once sat with two Broadway producing partners arguing over which of two opening nights in the same week was the right one. Talk about passion!

At Raleigh Little Theatre, we believe stories matter because they can build bridges to compromise; give us a peek into something new; help us see ourselves differently and give us joy. We are social animals meant to connect and evolve together. Thank you for making theatre one of your connections. It will always be a place where you belong.

A huge thank you to the cast, creative team and volunteers who spent time together over many days and weeks listening to music, learning about each other and creating this beautiful show. I am so happy to have re-connected with Betsy Henderson and appreciate her taking the helm of this project.

Thank you for being here.

Warmly,



Michele Weathers  
Producing Artistic Director  
Raleigh Little Theatre



# Cast

---

David O. Selznick  
**Seth Blum**

Victor Fleming  
**D.H. Johnson**

Ben Hecht  
**Dave Keats**

Miss Poppengul  
**Mary Floyd Page**

**WE SERVE  
SCHOOLS**

**WE FUND ARTISTS &  
ARTS ORGANIZATIONS**

**WE CREATE  
COMMUNITY**



Building a better Wake  
County through the  
support of and  
advocacy for the arts

This production was made possible  
with support from United Arts.

[unitedarts.org](http://unitedarts.org)

# Production Team

---

Director

**Betsy Henderson**

Scenic Designer/Production Manager/Technical Director

**Dennis R. Berfield**

Costume Designer

**Elsbeth McClanahan**

Fight Director

**Montgomery Davis**

Lighting Designer

**Thomas Matrejek**

Sound Designer

**Jared Rivera**

Props Designer

**Richard “Doc” Price**

Stage Manager

**Chris Berg**

Resident Costume Designer/Costume Shop Manager

**Jenny Mitchell**

Wig Stylist

**Tracy Byrd**

Assistant Technical Director

**Ali Wood**

Associate Costume Shop Manager

**Denise Schumaker**

Team Dynamics Strategist

**Kristina Brunelle**

# Letter from the Director

---

*Moonlight and Magnolias* invites us into a moment of theatrical mythmaking—the frantic, funny, and fiercely creative days that gave birth to *Gone With the Wind*. Few films have arrived with such force. When it debuted in 1939, it was not merely a movie but a national event: lines around city blocks, newspaper headlines, and a shared cultural experience that defined an era. Decades later, it remains a touchstone—debated, revisited, and undeniably influential—still asking us to reflect on how stories are told and who gets to tell them.

At its heart, this play is not only about Hollywood or a legendary script, but about collaboration under pressure. Three people in a room, driven by ego, fear, passion, and love for storytelling, racing against time to create something lasting. That spirit mirrors the very essence of community theatre. At Raleigh Little Theatre, we come together—artists, technicians, volunteers, and audiences—not for spectacle alone, but for the joy of making something meaningful together. There is nostalgia here, yes, but also a celebration of the creative chaos and communal energy that make live theatre possible.

I am deeply grateful to this remarkable cast and creative team, whose talent, generosity, and trust brought this production to life. Their dedication reflects the very heartbeat of community theatre: people showing up, supporting one another, and believing in the power of story. Thank you for being part of this shared experience, and for joining us as we step into the moonlight, surrounded by magnolias, and celebrate the enduring magic of theatre—past, present, and future.

Betsy Henderson  
Director



# Cast Biographies

---



**SETH BLUM** (David O. Selznick) is delighted to return to Raleigh Little Theatre as part of this fabulous team. Some favorite roles include Iago, Richard III, and Hamlet with Bare Theatre; Greg Wheeler in *A Kid Like Jake* for Vixen; Sherlock Holmes in *A Sherlock Carol* for Cary Theatre; and Randle McMurphy in *One Flew Over the Cuckoo's Nest* for Raleigh Little Theatre. Many thanks to Rebecca for holding down the fort in his absence - Your turn!



**DAVID KEATS** (Ben Hecht) is excited to return to Raleigh Little Theatre! For RLT: *Trouble in Mind*; for Burning Coal Theatre: *Once, Merrily We Roll Along*; for NRACT: *Parade*; for Justice Theatre Project: *A Few Good Men*. When not at work, Dave can often be found writing and recording songs with his talented wife, Kelley Keats. Endless thanks to Kelley, McCallum, and Avery for their love and continued support!

# Cast Biographies

---



**D.H. JOHNSON** (Victor Fleming) is a native of Benson. His latest work has been with Benson Little Theatre, appearing in *Irving Berlin's White Christmas*, *12 Angry Jurors*, *Annie*, *Guys and Dolls* and *The Odd Couple*. Direction credits there include *The Foreigner*, *Gypsy*, and *Southern Fried Funeral*. D.H. currently serves as co-chairman on the board of directors for the Benson Foundation for the Arts. He is grateful to be working with Raleigh Little Theatre, Betsy, David, and this marvelous cast.



**MARY FLOYD PAGE** (Miss Poppenghul) is so excited to be working with Raleigh Little Theatre for the first time. Mary received her BFA in Acting & Directing from UNCG and her MFA in Acting from USC Columbia. Other credits include: Martha Watson in *White Christmas*, Juror 11 in *12 Angry Jurors*, Boylan Sister in *Annie*, Emilie in *Emilie: La Marquise du Châtelet Defends Her Life Tonight*, Mrs. American in *Sunday in the Park With George*, and Helena in *A Midsummer Night's Dream*.



marketing • print • signs  
of Raeligh

Where business goes to grow.®  
Your Complete Marketing and Printing  
Services Provider



7209 Creedmoor Road, Suite 103 • Raleigh, NC 27613

**Phone : 919.846.6000**  
customerservice@pip.com  
www.piprdu.com

# Production Team

## Biographies

---

**BETSY HENDERSON** (Director) is excited to make her Raleigh Little Theatre directorial debut. Having appeared as an actor in RLT's production of *Spring Awakening*, Betsy is excited to work with this talented team on *Moonlight and Magnolias*. Betsy recently directed *The Play that Goes Wrong* at McGregor Hall in Henderson where she has also directed *To Kill a Mockingbird* (2017) and *Rumors* (2019). She has an MFA in Acting from the University of North Carolina at Greensboro and serves as Department Chair of Fine Arts and Humanities at Vance-Granville Community College, where she has also served as Director of VGCC Drama for the past 25 years. As an Arts advocate, Betsy serves on the Board of Directors for Granville Arts Council, as a county captain for NC's Arts Day, and past Chair of Granville Little Theatre. As an actress, Henderson has worked with Raleigh Ensemble Players (REP), Burning Coal Theatre Company, Theatre of the American South, Theatre Raleigh, Temple Theatre, and Justice Theatre Project. Henderson has toured nationally with productions of *Miracle Worker* (Annie Sullivan) and *Diary of Anne Frank* (Mrs. Frank). Most recently she was seen as Rachel in NRACT's production of *Appropriate*. Her biggest passion is advocating for the Arts and Artists. Thank you for supporting both!

**DENNIS R. BERFIELD** (Scenic Designer/Production Manager/Technical Director) is from South Williamsport, Pennsylvania. He received degrees in Theater and Communication Studies at the Lock Haven University of Pennsylvania, and a Masters of Fine Arts in Scenic Design and Technology at the University of Massachusetts, Amherst. Dennis has worked at various regional and off-Broadway theaters as a Scenic Artist, Carpenter, Master Carpenter, Scenic Designer, Assistant Technical Director, and Scenic Coordinator. After working professionally for a number of years, Dennis became an adjunct professor at Millikin University in Decatur, IL, and went on to become the Technical Director at the University of Scranton in Pennsylvania.

# Production Team

## Biographies

---

**ELSPETH MCCLANAHAN** (Costume Designer) recent credits include *What We're Up Against*, *Into the Woods*, *Antigone*, *She Kills Monsters*, *Elephant and Piggie*, *Misery*, and *All Smiles*. She received her bachelor's in Theatre from Radford University. Other credits include *Hair*, *La Cage aux Folles*, *Grease*, *Will Rogers Follies*, *Tommy*, *West Side Story*, and *42nd Street*. Locally, designs include *Freakshow*, *Parade*, and *The Book Club Play*. Her most recent work has been on Ira David Wood's *A Christmas Carol* and a soon-to-be-released documentary on the Battle of Moore's Creek. Special thanks to her family, especially her supportive husband, Marty.

**THOMAS MATREJEK** (Lighting Designer) is excited to be lighting once again at Raleigh Little Theatre (after being "banished" to the sound realm for the past 3.5 years, which he still enjoyed). Outside of RLT, he has continued to design lights. Recent lighting designs include *Grinch* with Hunter's Dance; *50 Years of Playhouse*, *The Cake*, and *All Together Now* with Playhouse of Wilson; *Everybody's Talking about Jamie* with NRACT, and *Pride and Prejudice* and *Junie B. Jones Is Not a Crook* with RLT; as well as countless dance recitals for Dance Studio B. Shoutout to my fam (especially my parents) as well as Ali and Darby for all their support.

**JARED RIVERA** (Sound Designer) has credits in theatre, television, and film. His screen work includes *Magnum P.I.*, *Hawaii Five-O*, *Press Play*, and the upcoming ABC series *RJ Decker*. He has designed productions for Burning Coal Theatre, Cary Players, Raleigh Little Theatre, and previously worked with KMC Onstage and Razz Ma Tazz Theater in Germany. He was recently honored in CVNC's 'Best of What We Saw: Triangle Theatre and Dance 2025' for his contributions to the local stage.

**RICHARD "DOC" PRICE** (Props Designer) is peeling back into Raleigh Little Theatre for the third time as props designer, and he has officially gone bananas working on *Moonlight and Magnolias*. Though he spent his early years monkeying around onstage, Doc has since found that he finds life behind the scenes truly a-peeling. These days, he loves slipping into the world of props design and stage management whenever life lets him hang around the bunch. Doc would like to extend a top banana thank-you to his amazing partner, Lauren, whose constant encouragement, support, and hands-on help have been absolutely wonderful and instrumental in ripening the props for this production.

# Production Team Biographies

---

**MONTGOMERY DAVIS** (Fight Director) (They/She) is excited to be returning to work at RLT. They have been such a joy to work with as they have returned back to the Triangle area after 13 years of touring and living in Atlanta. They are a recent graduate of N.C. State University, where they graduated with their master's in Elementary Education. They work as a fight and intimacy choreographer here in the Triangle and have done work both nationally and internationally, on stage, film, TV, and in video games. They are currently also teaching stage combat for RLT. Recent credits include: *Witch, Hadestown, Something Rotten* (RLT), *Cruel Intentions* (NRACT), *Grapes of Wrath* (Oglethorpe University), *Spring Awakening, Assassins* (Jennie T. Anderson), *Wait Until Dark* (Georgia Ensemble Theatre), and many more. They would like to send a special thanks to their husband, their three dogs, and their friends for their continued support.

**CHRIS BERG** (Stage Manager) is pleased to be back in the booth at Raleigh Little Theatre for the third time for this delightful look at a piece of cinematic history. Chris has been involved in the local theater scene, on both sides of the curtain, for the last 12 years (after taking a 20 year hiatus), but tends to be found more often now in the shadows than in the lights. He has acted in and stage managed shows at RLT, NRACT and Cary Players, where he also serves on the board. He gives thanks to the cast and crew for their hard work in putting this show together, and to his family for their support in his theatrical endeavours!!

**KRISTINA BRUNELLE** (Team Dynamics Strategist) is an Organizational Strategist and the founder of Momaging Made Easy, where she equips parents - especially moms - with the tools and confidence to guide their young actors through the often-overwhelming world of auditions, self-tapes, and casting. Her professional work focuses on helping leaders and teams thrive through purposeful conversations that build trust and connection, while her entrepreneurial work helps families navigate the business side of show business without losing their sanity. By night, she's an avid theatre-goer (likely in a row near you), and always grateful for the chance to support incredible casts and crews. Here's to a spectacular performance - on with the show! [MomagingMadeEasy.com](http://MomagingMadeEasy.com)



# ONE NIGHT ONLY!

BE THERE MAY 2, 2026, WHEN THE DIVAS TAKE THE STAGE FOR AN EXTRAORDINARY VEGAS-STYLE REVUE BENEFITING RALEIGH LITTLE THEATRE! ENJOY POWERHOUSE PERFORMANCES, A LIVELY RECEPTION, AND AN EXCITING SILENT AUCTION — ALL IN CELEBRATION OF COMMUNITY AND THE ARTS.



**SAVE THE DATE — MAY 2, 2026!**

# Program Notes

---

*Vic Fleming: If you can write it, I can shoot it.*

*Ben Hecht: The politics of it? At a time like this?*

Throughout this play, characters Victor Fleming, Ben Hecht, and David O. Selznick argue over the role of film in creating and responding to culture. Here, we take a closer look at some of the historical currents affecting the culture at that time.

The book *Gone with the Wind* was published in 1936 and made records with its book sales and cultural impact, making it natural that Selznick, who had just broken with MGM to found Selznick International Pictures in 1935, would want to capitalize on the popularity. However, there were multiple production setbacks, including halting production for multiple years to secure Clark Gable as the star, and the rewriting of the script depicted in this show; and reception was not guaranteed to be positive. The NAACP, in the middle of a fierce anti-lynching campaign, organized a boycott and picket of the film in major cities across the US.

The mid-1930s also saw the rise of Hitler in Germany and as pieces were being put in place for the beginning of World War II, Americans were divided between support for Nazism and concern about antisemitism. Some Jews in America, including Ben Hecht in this play, raised funds for Jewish refugees from Germany and Austria, while facing antisemitism in Hollywood. Many of the founders of American cinema in New York and Hollywood were Jews, who faced hostility from “old money” patrons, popular culture, and later, Congress through the House Un-American Activities Committee.

The world of 1939 Hollywood was, like ours, uncertain and divided, and amidst it all, people came together to create art.

# Raleigh Little Theatre

## Staff Biographies

---

**MICHELE WEATHERS** (Producing Artistic Director) (she/her/hers) Previously: Executive Director and Senior Executive Advisor at Carolina Ballet (2017-2023), Managing Director at PlayMakers Repertory Company (2014-2016), Managing Director at Barrington Stage Company (Pittsfield, MA) and North Carolina Theatre (1991-2004). NYC credits include: *In the Heights*, *High Fidelity*, *Orson's Shadow*, and *Red Light Winter*. In 2019, she was recognized with TBJ's Women in Business Leadership Award and, in 2024, she was a member of the inaugural group of award winners for Raleigh Magazine's Impact 50. DEI workshops: artEquity and Emerging Equity. Michele is a member of the League of Professional Theatre Women. Her daughter, Peyton Rose, is a freshman at Michigan State University. Meredith College grad. She is incredibly proud of RLT's place in the community.

**TERRA HODGE** (Director of Education) (she/her) is the Director of Education at Raleigh Little Theatre. She received her Bachelor of Arts degree in Theatre Education from North Carolina Central University and her Master of Arts degree in Media Arts from Long Island University, Brooklyn Campus. Prior to joining RLT, Terra was the Theatre Arts teacher at Culbreth Middle School in Chapel Hill, North Carolina. She was named the 2017-2018 Culbreth Teacher of the Year and was named an Honor Teacher for Chapel Hill - Carrboro City Schools. Terra has worked as a teaching artist, actor, and director with many local theatre companies. She is the director of Agape Theatre Project's production of *Crowns* that was featured at the 2024 International Black Theatre Festival in Winston Salem, NC.

**JENNY MITCHELL** (Resident Costume Designer/Costume Shop Manager) brings all her experience to Raleigh Little Theatre to work with volunteers to create the costumes for each production. Past work includes designs for *Kinky Boots*, *Something Rotten*, *Hadestown: Teen Edition*, and *Witch*. among so many others. She is thrilled to contribute to this production and help bring its visual world to life.

# Raleigh Little Theatre

## Staff Biographies

---

**MEGAN FARRELL** (Marketing Manager) joined the Raleigh Little Theatre team in August 2019. She holds a Bachelor's Degree in Business Administration with a concentration in Marketing from North Carolina State University. Megan grew up a theater kid and loves getting to "play" on the admin side of the performing arts now as an adult. When she's not at the theatre, Megan is likely cheering on the Dodgers, watching horror movies, or going on adventures with her tiny best friend Emmie. This production has conjured fond memories of acting in her favorite children's theatre production - *Going... Going... Gone with the Breeze!*

**HELEN NOWLAN-WALLS** (Development Manager) spent most of her life in the UK and Canada and moved to NC in 2023. She has been working in non-profit development for more than 20 years and has spent her career focussed on diversity, equity, and inclusion. She has a BA in English & Theatre and is thrilled to be returning to her theatre education and performance roots at RLT. Outside of work, Helen can be found driving her kids to their various rehearsals, wrangling her basset hound Daphne Honeybutt, watching murder mysteries, and playing video games whenever time allows it. Helen has been struck by lightning twice and hit by a double decker bus - all while riding a bicycle. Helen is no longer allowed to ride a bicycle.

**MERCEDES RUIZ** (Box Office & Front of House Supervisor) is thrilled to be a new addition to the RLT team! A long time attendee, Mercedes grew up seeing Cinderella annually with her grandfather. She later made her RLT debut as a Teacher's Assistant and actress, with credits including *A Year with Frog and Toad*, *Charlotte's Web*, *The Tempest*, and *Into the Woods*. A graduate of Elon University with a degree in Drama and Arts Administration, Mercedes has worked in patron services, education, development, and finance, with a focus on making theatre accessible to diverse audiences.

# Raleigh Little Theatre

## Staff Biographies

---

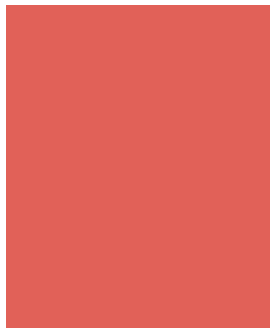
**ALI WOOD** (Assistant Technical Director) could be found both on-stage and backstage while she was growing up. From skits her grandfather wrote for church to performing at the local community theatre, Ali was always involved. However, during her college years, she found lighting and swapped over to the dark side. After graduating, Ali worked as an Entertainment Stage Technician for Walt Disney World and now she continues her career as the Assistant Technical Director here at Raleigh Little Theatre where she hopes to continue spreading the love and joy of theatre with everyone she meets.

**DENISE SCHUMAKER** (Associate Costume Shop Manager) has designed costumes, props and sets for theatre, dance, opera, and tours, plus film, television, and MrBeast, for over 35 years. She was honored with an Emmy® nomination in 2010. Recent work includes *Polyfamy* on TLC, the horror film *Bloodspawn* (2024), *Pippin* for Theatre in the Park, *The Marriage of Figaro* for NC Opera, *The Magic Flute* for Elon Opera Workshop, and RLT's Theatre For the Very Young production of *All Smiles*.

**CANDACE SPENCER** (Education Programs Specialist) is an accomplished African American theatre professional passionate about nurturing young artists. She holds a BA in Theatre from Greensboro College and an MFA in Theatre Performance from the University of Louisville. Candace has expanded her artistic perspective through a six-month study abroad program in London, where she explored theatre and dance. While pursuing her MFA, Candace gained four years of experience teaching introductory acting classes to undergraduates, and she developed on-camera acting skills during her undergraduate studies. She is skilled in drama instruction, on-stage and on-camera acting, and stage directing. Her dedication to youth development is not only evident in her teaching experience, but also in her work with young artists at a summer camp in Los Angeles, California. Candace's diverse training, experience, and love for theatre make her an invaluable asset to the RLT Education team.

# ARTS FOR ALL

Helping  
to Create  
Vibrant  
Communities  
Across  
North  
Carolina



Learn more at [NCArts.org](https://www.ncarts.org)



@ncartscouncil



@ncarts



A message from your North Carolina Arts Council.

# Raleigh Little Theatre

## Staff Biographies

---

**EMMA CLEMENTS** (Jack Hall Scholar) is a local director and producer. They are very excited to return to the RLT team for the 2025-2026 season as the Jack Hall Scholar! They recently graduated from UNC-CH, where they held several student leadership and production roles, including Executive Director of Production for Pauper Players' 2022-2023 season. Emma also serves as the Artistic Director for Boy With Box Theatre Company, a new small-budget theatre company in Chapel Hill.

**MAGGIE GINA** (Administrative Intern) is a senior at NC State majoring in Business Administration with a minor in arts entrepreneurship. Since she first picked up a trumpet at age 9, she was immediately drawn to a world of music and creativity, helping her realize she needed the arts to be forever a part of her life! Maggie is very excited to be a part of RLT and is grateful for the chance to gain real-world experience in marketing/administration and see first hand what it means to bring a performance to life. When not in the theater, Maggie can usually be found spending time with friends and family, studying, or in and out of practice rooms.

# Crews and Volunteers

---

Raleigh Little Theatre is grateful to the following individuals that have invested their time, skills, and expertise as part of our community of volunteers between January 13, 2025 - January 13, 2026.

## **ARCHIVES VOLUNTEERS**

**Catherine V. Lambe**

## **ASSISTANT DIRECTORS**

**Dan Bain**

**Lenore Clark**

**Metra Sheshbaradaran**

## **ASSISTANT STAGE MANAGERS**

**Lauren Montana**

**Doc Price**

**Jada Smith**

## **AUDITIONS CREW MEMBERS**

**Marie Berry**

**Amy Blackwell**

**Barbara Corbin**

**Linda Fetsko Depo**

**Laurel Drobits**

**Judy M. Dove**

**Judy Keyes**

**Catherine V. Lambe**

**Tony Landavazo**

**Denisse Lemos**

**John Maruca**

**Elaine Petrone**

**Heather Shinpaugh**

**Michael Teleoglou**

**Karen Wahle**

# Crews and Volunteers

---

## AUDITIONS CREW COORDINATOR

Marie Berry

## CHILD ACTOR SUPERVISORS

Marie Berry

Lauren Matthews

Amy Blackwell

Patrice Waller

Bill Buckner

Amber Wilkes-Smith

Mohoganey Hollowell

Lindsey Wyatt

## CAPTIONS CREW MEMBERS

Shruti Chavan

Chantea England

Jordan Cofield

Heidi York

## COSTUME SHOP CREW MEMBERS

Sofia Albahrawy

Clancy Bradbury

Matthew Anderson

Chantal Brown

Liz Armbruster

Jaye Bullock

Andrea Axtell

Emerson Bulluck

Kai Arroyo

Grey Burns

Lydia Aulisi

Alyssa Capps

Mardy Bell

Beth Castle

Ruth Berry

Myrakle Caston

Barbara Biggs

Sapphire Cook

Betsy Boyd

Sheridan Cooke

Millie Bozek

Barbara Corbin

# Crews and Volunteers

---

## **COSTUME SHOP CREW MEMBERS**

<b>Petra Crowe</b>	<b>Stephanie Lu</b>
<b>Laurel Drobits</b>	<b>Jay Mack</b>
<b>Susanna Edwards</b>	<b>Aja Maltin</b>
<b>Sarah Felts</b>	<b>Kathy Mauney</b>
<b>Lisa Flores-Wolfert</b>	<b>Bonita McPherran</b>
<b>Sam Frigerio</b>	<b>Heather Meadows</b>
<b>Sophie Gardner</b>	<b>Josie Milner</b>
<b>Samuel Geist</b>	<b>Kelley O'Byrne</b>
<b>Troysha Giggans</b>	<b>Nancy Pennington</b>
<b>Laurel Gregory</b>	<b>Jill Pownall</b>
<b>Shannon Hahn</b>	<b>Cynthia Ramos</b>
<b>Ann Haigler</b>	<b>Leanne Richbourg</b>
<b>Mohoganey Hollowell</b>	<b>Nayeli Rios-Guzman</b>
<b>Gloria Hope</b>	<b>Aleena Rivera</b>
<b>Liz Houde</b>	<b>Sue Rudkin</b>
<b>Hannah Hudyncia</b>	<b>Alyssa Sanders</b>
<b>Jill Joffe</b>	<b>Will Saponara</b>
<b>Gwen Johnson</b>	<b>Mallory Schultz</b>
<b>Mallory Koerner</b>	<b>James Shaw</b>
<b>Julija Kolenceva</b>	<b>Heather Shinpaugh</b>
<b>Maitreyee Kulkarni</b>	<b>Dillon Shorter</b>
<b>Catherine V. Lambe</b>	<b>Eleanor Silver</b>
<b>Anne Langdon</b>	<b>Amanda Smith</b>
<b>Michaela Langley</b>	<b>Jada B. Smith</b>
<b>Barbara Leimgruber</b>	<b>Nicole Solera</b>
<b>Timothy Locklear</b>	<b>Alex Stevens</b>
<b>Ana Louis</b>	<b>Pam Swanstrom</b>

# IS YOUR STAR READY FOR THE SPOTLIGHT?

## Helping Parents Navigate the Acting Journey with Confidence

From school plays to professional auditions, helping your child shine takes more than talent.

That's where **Momaging Made Easy** comes in.

Grab Your **Free Resource:**  
*The Ultimate Self-Tape Checklist for Parents*

Learn the gear, setup, and steps you need to help your child land auditions that get noticed.



SCAN HERE OR VISIT:

[WWW.MOMAGINGMADEEASY.COM](http://WWW.MOMAGINGMADEEASY.COM)

Momaging Made Easy | Supporting Your Star Every Step of the Way

# Crews and Volunteers

---

## **COSTUME SHOP CREW MEMBERS**

**Laura Sweeney  
Natalie Thompson  
Wren Wick**

**Alana Williamson  
Liz Winfrey  
Becca Woltz**

## **DECK CREW MEMBERS**

**Nmesomachim Ani  
Fidel Benton  
Jorge Betancourt  
Yusha Bey  
Dustin Bowles  
Peri Boylan  
Ebie Britt  
Charlie Chappel  
Jordan Cofield  
Chris Crowe  
Petra Crowe  
Shiri Dayan  
Anakin Ducheneaux  
Bri Flynn  
Samantha Gallup  
Whitney Glomb  
Lea Goldstein  
Alex Gromo  
Sadie L. Harper**

**Mohoganey Hollowell  
Gloria Hope  
Essie Horne  
Victoria Kalendra-Frysta  
Ryan Jones  
Amy Keyworth  
Fox LaLeaf  
Sonya LaLeaf  
Tony Landavazo  
August LeBlanc  
Robby Levenson  
Joey Lloyd  
Zoe Luglan  
Dani Miano  
Lauren Montana  
Michael Parrill  
Amy Plahuta  
Doc Price  
Katherine Shauger**

# Crews and Volunteers

---

## DECK CREW MEMBERS

Metra Sheshbaradaran

Ray Siminski

Aubrey Thomas

Natasha Tyson

Renee Vessels

Lara West

Heidi York

## DRESSER CREW SUPERVISORS

Beth Castle

Jennifer Dai

Lindsey Wyatt

## DRESSER CREW MEMBERS

Marie Berry

Amy Blackwell

Beth Castle

Petra Crowe

Jennifer Dai

Kendra Drylie

Mohogany Hollowell

Essie-Richelle Horne

Savannah Johnson

Kat Lanier

Karen Matthews Lee

Helen Remington

Dillon Shorter

Jamie Smith

Sophie Thibodeaux

Lindsey Wyatt

## FIRE WATCH MEMBERS

Dustin Bowles

Marc Macenko

Thomas Matrejek

Lauren Montana

Lara West

# Crews and Volunteers

---

## **FLY CREW MEMBERS**

**Nmesomachim Ani**

**Yusha Bey**

**Peri Boylan**

**Jordan Cofield**

**Chris Crowe**

**Shiri Dayan**

**Bri Flynn**

**Samantha Gallup**

**Gloria Hope**

**Ryan Jones**

**Fox LaLeaf**

**Sonya LaLeaf**

**Tony Landavazo**

**Joey Lloyd**

**Daniel McKay**

**Amy Plahuta**

**Simone Pohlman**

**Doc Price**

**Katherine Shauger**

**Ray Siminski**

**Natasha Tyson**

**Zara Van Hemert**

**Lara West**

## **LEAD USHERS**

**Kristina Brunelle**

**Judy M. Dove**

**Michael Dunavan**

**Amy Hellmers**

**Amelia Lumpkin**

**Lilo Miles**

**Chanté Thompson**

**Lindsey Wyatt**

# Crews and Volunteers

---

## **LIGHTING CREW MEMBERS**

<b>Gary Bossert</b>	<b>Darby High</b>
<b>Dustin Bowles</b>	<b>Gloria Hope</b>
<b>Chantal Brown</b>	<b>Ryan Jones</b>
<b>Maggie Brown</b>	<b>Beth Kirby</b>
<b>Shruti Chavan</b>	<b>Catherine V. Lambe</b>
<b>Saphire Cook</b>	<b>Michael Lewis</b>
<b>Barbara Corbin</b>	<b>Paisley McIntyre</b>
<b>Petra Crowe</b>	<b>Lauren Montana</b>
<b>Shiri Dayan</b>	<b>Tom Normanly</b>
<b>Anakin Ducheneaux</b>	<b>Veronica Passarelli</b>
<b>Chantea England</b>	<b>Amy Plahuta</b>
<b>Janaya Farrar</b>	<b>Doc Price</b>
<b>Laurel Feldner</b>	<b>Katherine Shauger</b>
<b>Lea Goldstein</b>	<b>Bob Tomasulo</b>
<b>Gavin Hamilton</b>	<b>Lizzy Yingling</b>
<b>Violet Hellmers</b>	<b>Heidi York</b>

## **PROPS CREW SUPERVISORS**

**Catherine V. Lambe**

# Art Everywhere, by Everyone



The City of Raleigh Arts Commission nurtures creativity and enriches our community by championing the arts in Raleigh:

- Partnering with local arts and cultural nonprofits
- Supporting public art and artists
- Producing exhibitions, arts programs and special events
- Advocating for arts investments

## 2025–2026 RALEIGH ARTS PARTNERS

- African American Cultural Festival
- Arts Access
- Arts Together
- Artspace
- Artsposure
- Burning Coal Theatre Company
- Carolina Ballet
- Chamber Music Raleigh
- Community Music School
- Contemporary Art Foundation
- Cultural Voice of NC
- Educational Growth Across Oceans
- El Pueblo
- The Justice Theater Project
- Little Raleigh Radio
- The NC Chamber Music Institute
- NC Master Chorale
- NC Opera
- NC State LIVE
- NC State University Theatre
- NC Symphony
- North Raleigh Arts & Creative Theatre
- Nuv Yug Cultural Organization
- PineCone
- Pure Life Theatre Company
- Raleigh Civic Symphony Association
- Raleigh Little Theatre
- The Raleigh Music Collective
- The Raleigh Ringers
- Raleigh Youth Choir
- ShopSpace
- Theatre in the Park
- TheGifted Arts
- Theatre Raleigh
- Triangle Youth Music



Raleigh  
Arts

[raleighnc.gov/arts](http://raleighnc.gov/arts)  
919-996-3610



# Crews and Volunteers

---

## PROPS CREW MEMBERS

<b>Sofia Albahrawy</b>	<b>Victoria Kalendra-Frysta</b>
<b>Chloe Allen</b>	<b>Sonya LaLeaf</b>
<b>Liz Armbruster</b>	<b>Catherine V. Lambe</b>
<b>Yusha Bey</b>	<b>Morgan Lamps</b>
<b>Gary Bossert</b>	<b>Cathryn Lampus</b>
<b>Angelica Bridges</b>	<b>Michaela Langly</b>
<b>Shruti Chavan</b>	<b>Zoe Luglan</b>
<b>Chris Crowe</b>	<b>Amy Plahuta</b>
<b>Petra Crowe</b>	<b>Simone Pohlman</b>
<b>Michael Dunavan</b>	<b>Doc Price</b>
<b>Whitney Glomb</b>	<b>Metra Sheshbaradaran</b>
<b>Kaylee Hahn</b>	<b>Carolyn Shi</b>
<b>Gavin Hamilton</b>	<b>Michael Teleoglou</b>
<b>Violet Hellmers</b>	<b>Sophie Thibodeaux</b>
<b>Manika Hemmerich</b>	<b>Renee Vessels</b>
<b>Mohoganey Hollowell</b>	<b>Lara West</b>
<b>Michael Jernigan</b>	<b>Ezra Zhang</b>
<b>Joss Kagarise</b>	

# Crews and Volunteers

---

## SCENE SHOP CREW MEMBERS

Chloe Allen	Jordan Cofield
Nmesomachim Ani	Caden Connor
Lydia Aulisi	Sapphire Cook
Julianna Babcock	Sheridan Cooke
Brenda Bailey	Brett Cooper
Fidel Benton	Joe Cordaro
Yusha Bey	Chris Crowe
Haritha Bhatta	Shiri Dayan
Gary Bossert	Nic DeBruin
Rebecca Beaulieu	Susanna Edwards
Dustin Bowles	Raesha Emerson-Cook
Peri Boylan	Chantea England
Chantal Brown	Larry Fantozzi
Dylan Bruchhaus	Kathleen Friedley
Jennifer Bryant	Stephen Furs
Bill Buckner	Samantha Gallup
Enya Burningham	Troysha Giggans
Grey Burns	Whitney Glomb
Joe Burns	Lea Goldstein
Alanya Campbell	Matthew Graham
Victoria Centeno	Angel Grayson
Charlie Chappel	Derrick Grooms
Joseph Citta	Graham Guzynski
Gillian Coats	Gavin Hamilton

# ★ Empire Eats ★

Restaurants!

We've been called a lot of things,  
but ordinary isn't one of them



THE MECCA RESTAURANT



Landmark TAVERN



[empireeats.com](http://empireeats.com)

# Crews and Volunteers

---

## SCENE SHOP CREW MEMBERS

<b>Mariam Hattab</b>	<b>Amy Meller</b>
<b>Mark Headen</b>	<b>Kaitlin Merlino</b>
<b>Joseph Heil</b>	<b>Alex Mikolasko</b>
<b>Violet Hellmers</b>	<b>Don Miller</b>
<b>Samuel Hill</b>	<b>Lauren Moser</b>
<b>Mohogany Hollowell</b>	<b>Koda N.</b>
<b>Gloria Hope</b>	<b>Nasseer Naji</b>
<b>Cindy Hughey</b>	<b>Jeff Nugent</b>
<b>Eric Jensen</b>	<b>Ethan Onkundi</b>
<b>Cat Johnson</b>	<b>Livia Onkundi</b>
<b>Emma Kirkner</b>	<b>Sophie Orlet</b>
<b>Maitreyee Kulkarni</b>	<b>David Oyler</b>
<b>Hillary Kwarteng</b>	<b>Veronica Passarelli</b>
<b>Fox LaLeaf</b>	<b>Honey Patel</b>
<b>Sonya LaLeaf</b>	<b>Jessica Pecor</b>
<b>AT LeBlanc</b>	<b>Naomi Perino</b>
<b>Lacey Lewis</b>	<b>Ann Perry</b>
<b>Trystan Luongo</b>	<b>Elaine Petrone</b>
<b>Kaitlyn Macenko</b>	<b>Amy Plahuta</b>
<b>Marc Macenko</b>	<b>Nia Porter</b>
<b>Jay Mack</b>	<b>Jill Pownall</b>
<b>Melody Markert</b>	<b>Jacob Presson</b>
<b>Grace McCarthy</b>	<b>Karina Prut</b>
<b>Samuel Mccraw</b>	<b>Daniel Rapuano</b>

# Crews and Volunteers

---

## SCENE SHOP CREW MEMBERS

<b>Heath Roberts</b>	<b>Kristina Thomas</b>
<b>Caitlin Romig-Koch</b>	<b>Alison Thompson</b>
<b>Katherine Shauger</b>	<b>Bob Tomasulo</b>
<b>Carolyn Shi</b>	<b>Blaise Tucker</b>
<b>Raymond Siminski</b>	<b>Natasha Tyson</b>
<b>Sarah Sinawi</b>	<b>Meoshia Wallace</b>
<b>Jamie Smith</b>	<b>Alephie White</b>
<b>Dave Sniffin</b>	<b>Wren Wick</b>
<b>Jake Standish</b>	<b>Alana Williamson</b>
<b>Matt Steindl</b>	<b>Michelle Wood</b>
<b>Rogelio Sullivan</b>	<b>Lizzy Yingling</b>
<b>Sophie Thibodeaux</b>	<b>Ezra Zhang</b>
<b>Aubrey Thomas</b>	<b>Toby Zuiderhof</b>

# Crews and Volunteers

---

## **SOUND CREW MEMBERS**

<b>Sam Beck</b>	<b>Michael Lewis</b>
<b>Jorge Betancourt</b>	<b>Logan MacDonald</b>
<b>Angelica Bridges</b>	<b>Paisley McIntyre</b>
<b>Natalie Brooke</b>	<b>Lauren Montana</b>
<b>Chantal Brown</b>	<b>Tom Normanly</b>
<b>Elizabeth Capps</b>	<b>Veronica Passarelli</b>
<b>Shruti Chavan</b>	<b>Amy Plahuta</b>
<b>Sapphire Cook</b>	<b>Karina Prut</b>
<b>Barbara Corbin</b>	<b>Katherine Shauger</b>
<b>Chris Crowe</b>	<b>Micah Shelton</b>
<b>Sarah Doering</b>	<b>Metra Shesbaradaran</b>
<b>Chantea England</b>	<b>Joe Swain</b>
<b>Lea Goldstein</b>	<b>Bob Tomasulo</b>
<b>Ryan Jones</b>	<b>Rachel Ward</b>
<b>Victoria Kalendra-Frysta</b>	<b>Selah Woodhead</b>
<b>Jared Kirkpatrick</b>	<b>Lizzy Yingling</b>
<b>Catherine V. Lambe</b>	<b>Heidi York</b>
<b>Robby Levenson</b>	

For more information about volunteering at RLT,  
contact Cari by email at [Cari@RaleighLittleTheatre.org](mailto:Cari@RaleighLittleTheatre.org)  
or via telephone at 919-821-4579 x 232.

# 2025-2026 Board of Directors

---

**Steve Epstein  
(President)**

**Betsy Ludwig  
(Vice President)**

**Amelia Lumpkin  
(Secretary)**

**Clifton M. Cates III  
(Treasurer)**

Gene Cordon

Judy M. Dove

Rudra Dutta

Safiyah Jackson

Carol Machuca

Heather Mintz

Marquita Robertson

Suzanne Ruggles

Phillip Bernard Smith

Mark Steward

Victoria Wheeler

Michael Dunavan  
*(Volunteer Rep)*

Caitlin Poe  
*(Board Attorney)*

**Raleigh Little Theatre productions are driven by our volunteers. There are countless ways you can get involved, with any skills (or desire to learn new skills) you have, including:**

### **Teaching Assistant**

Help our Teaching Artists with classes in our education programs and camps for youth!

### **Costume Shop**

Learn or use your existing skills in sewing, costume repair, hat/mask making, wig styling, and more to help make our productions' costumes!

### **Scene Shop**

You can l Learn or use your existing skills in construction, fly rigging, painting, and more to help bring our sets to life.

### **Acting**

Put a character and a show on its feet!

Visit [RaleighLittleTheatre.org/Auditions](https://RaleighLittleTheatre.org/Auditions) for upcoming opportunities.

### **Lighting, Sound, Props, Deck, and Dresser Crews**

Create "theatre magic" by working to make all of the elements of a show happen on time!

### **Assistant Stage Manager**

Relay information between the Stage Manager, actors, and backstage crews in real time so each show runs smoothly and efficiently.

### **Assistant Director**

Help the director make the show happen!

### **Usher/Concessions**

Welcome audience members, scan tickets, sell concessions, and help patrons find their playbills and seats.

### **House Manager**

Coordinate and manage all of the moving pieces of audience arrival, departure, and experience during their time at the theatre.



Visit [RaleighLittleTheatre.org/Volunteers](https://RaleighLittleTheatre.org/Volunteers) or scan the QR code to learn more about volunteering at RLT and sign up for our email list. We hope to see you soon!



# Raleigh Little Theatre Staff

---

Producing Artistic Director

**Michele Weathers**

Production Manager/Technical Director

**Dennis R. Berfield**

Director of Education

**Terra Hodge**

Costume Shop Manager/Resident Costume Designer

**Jenny Mitchell**

Marketing Manager

**Megan Farrell**

Development Manager

**Helen Nowlan-Walls**

Box Office & Front of House Supervisor

**Mercedes Ruiz**

Assistant Technical Director

**Ali Wood**

Associate Costume Shop Manager

**Denise Schumaker**

Education Programs Specialist

**Candace Spencer**

Box Office Associates

**Jackson Griffin**

**Jada Smith**

**Joel Schaer**

**Morgan Harris**

**Nic Johnson**

Jack Hall Scholar

**Emma Clements**

Administrative Intern

**Maggie Gina**

# Donors

---

## **1936 LEGACY SOCIETY**

Anonymous (2)  
Charles W. Burton, Jr.  
Carlie Huberman  
Adrienne Lumpkin  
Velvet Rattelade  
Clifford and Janet Raynor  
Donald and Bonita Scott  
Leigh Ann Wilder and John B. Holding  
David and Judi Wilkinson

Raleigh Little Theatre is grateful to the following individuals, companies and private and public funding agencies that have invested in live, community theatre and arts education. This list reflects gifts to the general needs of the theatre of \$100 or more between January 13, 2025 - January 13, 2026.

## **CORPORATE PARTNERS**

Capital Broadcasting Company/WRAL TV5  
Coastal Credit Union  
Crawley, Lee & Company  
Link by Link  
North State Bank  
WALTER Magazine

# Donors

---

## **FOUNDATION AND GOVERNMENT PARTNERS**

Bell Family Foundation

Capital City Civitan Club

Charles W. Gaddy and Lucy Finch Gaddy Endowment Fund

City of Raleigh Arts Commission

Find Your Light Foundation

Floyd Family Foundation

Hubie Poteat Memorial Scholarship Fund

John Rex Endowment

Julia and Frank Daniels, Jr. Endowment Fund of Triangle Community  
Foundation

Maurer Family Foundation

North Carolina Community Foundation

Talk It Out NC

The Irene Ryan Foundation

The Jandy Ammons Foundation

The W. Trent Ragland Foundation

The Warner Fund

United Arts Council of Raleigh & Wake County

# Donors

---

## **MARQUEE CIRCLE - \$5,000+**

Chuck & Nancy Crew  
Diane Cain Fiduccia  
Eileen & Michael Hendren  
Mindtracs  
Jim and Cantey Tanner

## **FITZ-SIMONS SOCIETY - \$2,500+**

John Adams  
Peter & Nancy Watkins Dimitrios\*  
Ruth Bromer & Joseph Huberman  
Chancy & Keith Kapp  
Catherine V. Lambe  
Kiron Rakkar & David Watts\*

## **PRODUCER - \$1,000+**

David and Carol Carlson  
Alec and Georgia Donaldson^  
Mickey Fearn  
Stephen Furs  
Rob & Linda Grew  
Charles & Cheryl Hall  
Rick LaBach  
Mike & Maggie McGee\*^



4351 The Circle at North Hills  
Raleigh, NC 27609  
919.856.0604 - [edibleartnc.com](http://edibleartnc.com)

# Donors

---

## **PRODUCER - \$1,000+**

Victoria Nevois Household  
Phyllis Parish & Seab Howard  
Clifford & Janet Raynor^  
Robert & Connie Shertz  
Gail G. Smith  
David Wilkinson  
Steve and Lisa Zaytoun

## **DIRECTOR - \$500+**

Bill Brown  
Roy and Kristin Cooper  
Gene Cordon  
Ruth Freeman  
Jean Gross & Don Miller^  
Kathleen Curie Hall  
Meredith and Jonathan Howland  
Alan Hymowitz & Olivia Fried  
Jeanette Jackson^  
Jean Jamison  
Amelia Lumpkin Household\*  
Greg Moore & Kevin O'Barr  
Bonnie & Don Scott

# Donors

---

## **DESIGNER - \$250+**

Margaret & Joseph Heil

Anonymous

Robyn Bissette

Amy Blackwell^

Kylee Bloodworth

Ross Clay

Barbara Corbin

Rebecca Crosson

Ken and Cindy Denison

Lynda Federowicz

Tony & Elli Gemma

Terry Haggerty^

Leslie Ann Jackson

Adrienne Kelly-Lumpkin

Kathy Mauney^

Heather Mintz

John Riedy

Joyce Rothchild^

Jamie Smith

Theodore Smyth

Charlotte & Brian Sweeney

Mark Tulbert & Rob Maddrey

# Donors

---

## **ACTOR - \$100+**

Lee & Sunny Allen

Carolyn Anderson

Anonymous

Michelle Bamford

Greg & Laura Bottomley

Bill & Sandra Boyd

Jim Burnette & Stephen Davis

Sylvia Burns

Colleen Castro

Clifton Cates

Dr. Kenneth W. Chandler & Ms. Glynis E. Hill-Chandler

Suzanne Chaploney

Teresa & Charles Cramer

Renee Crowson

Holly Crumpler

Bob & Linda Cyrus

Lorraine Diamond

Judy & Kent Dove

Rudra Dutta^

Tom & Peggy Eifler\*

Ellen & Larry Goode

Natasha Gore

Maureen Grant

Karyn Harrell^

# Donors

---

## **ACTOR - \$100+**

Derreth & John Kavanagh

The Kenny Family

Anthony Lewitt

Richard & Sara Loeppert

Allison Maney

Kenneth Marks

Amanda Matsov

Michael & Helen McGee

Allison Medlin

Molly Mersch

Kimberly Miles

Kathleen Milligan

Lise Osvold and Robert Miller

John Paccione

J. Paumier & M. Gumpertz

Gil & Mel Pena

Rick & Cindy Puetzer

Dave Richard

Janet Schmitt

Saul Shapiro

Susan Sigmon

# Donors

---

## **ACTOR - \$100+**

Windy Sipe Household

Antonio & Tammie Stagnitta

Cathy & Jim Stuart

Nicholas Thomas^

Rose Troyer

Helaine Turek

Mary Ann Turner

Larry Vack

Diane & Jeff Williams

David & Norma Zendels

Donald A. Ziff and Dorothy T. Manly

# Donors

---

## IN HONOR OF...

Anne Knight  
Katie Bottomley

## IN MEMORY OF...

Patsy Clarke  
Joyce Davis  
Elizabeth Grimes Droessler  
Haskell Fitz-Simons  
Jack Hall  
Larry Vack  
Judiann Wilkinson

*\*These patrons support RLT and their employers  
generously match their gifts.*

*^These patrons are RLT Sustainers and support RLT  
with automatic recurring donations.*

*For more information about investing in RLT,  
contact Helen Nowlan-Walls by email  
at [Helen@RaleighLittleTheatre.org](mailto:Helen@RaleighLittleTheatre.org) or  
via telephone at 919-821-4579.*

On Stage @



RALEIGH  
LITTLE  
THEATRE

1776



MARCH 27 - APRIL 19

THE  
HOBBIT

MAY 2 - 10

SCHOOL  
OF  
ROCK

JUNE 5 - 28



Plus!

"Theatre for the Very Young" productions, designed for ages 0-5

Música, Música,  
Máximo, Música

MARCH 4 - 15

DINOSAUR!

MAY 27 - JUNE 7

Visit [RaleighLittleTheatre.org](http://RaleighLittleTheatre.org), call 919-821-3111, or scan the QR code for tickets and more information!





**RALEIGH  
LITTLE  
THEATRE**

**TICKETS: 919-821-3111**

RaleighLittleTheatre.org



**@RLT1936**