



RALEIGH
LITTLE
THEATRE

2025/2026
SEASON

THE PRINCE STREET PLAYERS LTD.
PRODUCTION OF



Cinderella

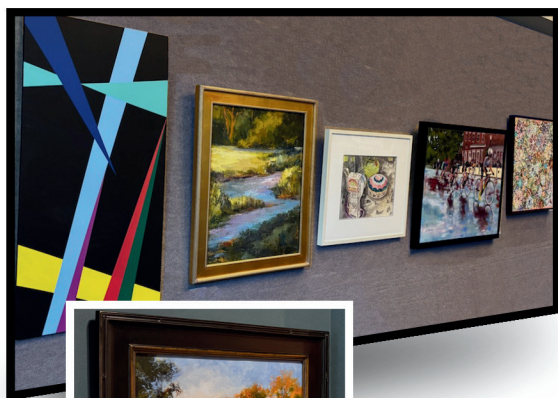
DECEMBER 5 - 21

BASED ON THE FAIRY TALE BY **CHARLES PERRAULT**
ADAPTATION AND LYRICS BY **JIM EILER**
MUSIC BY **JIM EILER AND JEANNE BARGY**

DIRECTED BY **RUTHIE MARTINEZ**

Spotlights, + Brushes &rokes

The Arts are Exploding at Raleigh Little Theatre!



Now, in addition to the incredible **art on stage**, enjoy the wealth of fine art on our lobby walls and in display cases.

Curated by local artists **Jean Corbett**, **Eileen Hendren**, and **Scott Jamison**, the exhibit features original pottery, landscapes, still lifes, abstracts, and much more from **award-winning local talents**.

All art is available for purchase

Scan here
for details
and purchase
information.



RALEIGH
LITTLE
THEATRE



GlenwoodFineArt.com
20 Glenwood Ave. Raleigh
Glenwood Fine Art



**RALEIGH
LITTLE
THEATRE**

presents

THE PRINCE STREET PLAYERS LTD.

Production of

Cinderella

**BASED ON THE FAIRY TALE BY CHARLES PERRAULT
ADAPTATION AND LYRICS BY JIM EILER
MUSIC BY JIM EILER AND JEANNE BARGY**

CINDERELLA - PRINCE STREET PLAYERS VERSION is presented
through special arrangement with Music Theatre International (MTI).

All authorized performance materials are also supplied by MTI.

www.MTIShows.com

**ANY VIDEO AND/OR AUDIO RECORDING OF THIS
PRODUCTION IS STRICTLY PROHIBITED.**

Directed by Ruthie Martinez

Music Direction and Orchestrations by Christian L. Stahr

Choreographed by Jose Rondon Jr

Original Costume Design by Vicki Olson

Costume Design by Jenny Mitchell

Lighting Design by Darby E. Madewell

Sound Design by Craig Johnson and Jonathan Kilom

Props Design by Denise Schumaker

Stage Managed by Chris Acevedo

Animation for Cinderella Origin Story by Christy Kim



The more we all give, the more the community gives back.

At the Coastal Credit Union Foundation, we're proud of the fact that we've provided more than \$3 million in community grants. If you look around at the organizations doing great things for the people in this area, it's clear it's the best investment we've made.

Coastal is proud to support the Raleigh Little Theatre in their production of Cinderella.



bankbetter.org

Sponsors

Special thanks to our show sponsor, Coastal Credit Union.



Additional thanks to our media sponsor, WRAL.



This program is funded in part by the City of Raleigh based on recommendations of the Raleigh Arts Commission.



Cinderella is supported by United Arts Wake County, as well as the N.C. Arts Council, a division of the Department of Natural and Cultural Resources.



@RLT1936

Special thanks to David Watts for website maintenance, West Raleigh Presbyterian Church, Eddie Wright, and Chanté Thompson and Morgan Harris for the beautiful boutique.

Welcome to Raleigh Little Theatre

Each December when Cinderella returns to our stage, it brings with it a sense of comfort and connection that feels uniquely ours. Like a joyful little spell that reminds us compassion matters and kindness is never out of style, this holiday tradition celebrates 41 years of enchantment because of you and we are so grateful that we are part of your holiday.

Your presence, your support, and your belief in community-built theatre are the heartbeats of this show and Raleigh Little Theatre. What happens onstage only works because of what happens offstage. You help create a place where young people discover confidence, where volunteers find purpose, and families return year after year keeping traditions alive. Without you, we wouldn't be us. Thank you for sharing this holiday moment with us.

I hope Cinderella brings a little sparkle to your season and serves as a reminder that even the smallest acts of kindness can feel like magic.

For all the ways there are to be involved with us, I hope one finds you. Visit raleighlittletheatre.org or reach out to any member of our staff and Board to let us know how we can open doors for you.

Happy holidays,



Michele Weathers
Producing Artistic Director



Art Everywhere, by Everyone



The City of Raleigh Arts Commission nurtures creativity and enriches our community by championing the arts in Raleigh:

- Partnering with local arts and cultural nonprofits
- Supporting public art and artists
- Producing exhibitions, arts programs and special events
- Advocating for arts investments

2025–2026 RALEIGH ARTS PARTNERS

- African American Cultural Festival
- Arts Access
- Arts Together
- Artspace
- Artsposure
- Burning Coal Theatre Company
- Carolina Ballet
- Chamber Music Raleigh
- Community Music School
- Contemporary Art Foundation
- Cultural Voice of NC
- Educational Growth Across Oceans
- El Pueblo
- The Justice Theater Project
- Little Raleigh Radio
- The NC Chamber Music Institute
- NC Master Chorale
- NC Opera
- NC State LIVE
- NC State University Theatre
- NC Symphony
- North Raleigh Arts & Creative Theatre
- Nuv Yug Cultural Organization
- PineCone
- Pure Life Theatre Company
- Raleigh Civic Symphony Association
- Raleigh Little Theatre
- The Raleigh Music Collective
- The Raleigh Ringers
- Raleigh Youth Choir
- ShopSpace
- Theatre in the Park
- TheGifted Arts
- Theatre Raleigh
- Triangle Youth Music



**Raleigh
Arts**

raleighnc.gov/arts
919-996-3610



Order of Songs

Cinderella is performed without an intermission.

The Kingdom of Good Queen Darling III

Many years ago on Christmas Eve and Christmas Day

Scene I: Town Square

*Prologue****.....Town Kids & Ensemble

Scene II: A Magical Place

Hi Diddle Dee.....Fairy Godmother, Sugar, Spice

Scene III: Stepmama's House, Morning of Christmas Eve

*What's to Become of Me?****.....Cinderella

Get to Work.....Stepmama, Gertrude, Henrietta

What's to Become of Me? Reprise.....Cinderella

Fairy Godmother, Sugar, Spice

Scene IV: Castle Throne Room

*Queen Darling's Uptempo Lament****.....Queen Darling

Pages, Sugar, Spice

*What's to Become of Me?****.....Prince Charming

Scene V: Town Square

*Holly Berry**.....Town Kids & Ensemble

Scene VI: Stepmama's House

Knock, Knock, Knock..... Cinderella, Stepmama, Gertrude

Henrietta, Sugar, Spice

Invitation to the Ball.....Cinderella, Stepmama, Gertrude

Henrietta, Sugar, Spice

Order of Songs

Scene VI: Stepmama's House

At The Ball.....Stepmama, Gertrude, Henrietta
What's to Become of Me? Second Reprise.....Cinderella
*Magic of the Moment***Fairy Godmother

Scene VII: The Garden

Pony Tales.....Ponies
Send Off.....Fairy Godmother & Ensemble

Scene VIII: Castle Ballroom

Cinderella's Entrance.....Stepmama, Gertrude
Henrietta, Ensemble
Sneeze Polka.....Gertrude, Henrietta, Ensemble
*Best of All****.....Cinderella & Prince Charming
Best of All Reprise.....Prince Charming & Ensemble

Scene IX: Castle Corridor

Scene X: Stepmama's House

Finale.....Fairy Godmother, Sugar, Spice, Ensemble
Bows.....Ensemble

Orchestrations by Christian L. Stahr.

** Music by Martin Shaw, Lyrics by Haskell Fitz-Simons and Nancy Rich*

*** Lyrics by Haskell Fitz-Simons; descant melody by Suann A. Strickland;
orchestrations by F. Charles Anderson*

**** Music by Julie A. Florin and Lyrics by Haskell Fitz-Simons*

***** Music and Lyrics by Joanna Li*

Letter from the Director

I'm a bit of a *Cinderella* veteran. I've done the Rodgers and Hammerstein version several times, most notably playing Cinderella in a community production and the Queen at North Carolina Theatre years ago. I've also directed and played Cinderella in different productions of *Into the Woods*. In these versions, we see Cinderella's familiar journey through different lenses. Sometimes as a hopeful dreamer who puts up with her circumstances, sometimes as someone who is indecisive and lets fate take her where it may.

In working on the script and as beautifully portrayed by this year's cast, I feel so encouraged by Raleigh Little Theatre's *Cinderella*. While having to endure the oppression of her stepmother and stepsisters, she knows there is more for her. She still takes comfort from the love of her father and the courage demonstrated by the heroines in her books. She develops her mind through reading and her studies. She finds friendship and kindness and doesn't give into bitterness or despair. Her kindness and ability to keep her heart open leads her to a new life. She keeps moving forward—our heroine is strong!

Our helpers and Fairy Godmother recognize that sometimes a good person just needs a little magic to help them realize their future. And all is wrapped up in the joy, happiness and hopefulness of the holiday season. What a wonderful way to tell this story! In our time, I hope that RLT's *Cinderella* gives you that same joy and encouragement. Make it a new or continuing holiday tradition!

Letter from the Director

I have been blessed to direct this show with such a talented and supportive team and cast. I want to thank Michele Weathers for giving me a second opportunity to direct the show this year. My sincere gratitude to music director Christian Stahr, stage manager Chris Acevedo, as well as ASMs Fox and Sonya LaLeaf for being such a great team and for all your support again this year. Thanks to all of the wonderful designers and staff at RLT who make the magic for *Cinderella* every year! Kudos and my appreciation to choreographer Jose Rondon Jr. for putting your energy and talent into the show this year and making it shine! Thank you for your support of RLT—enjoy *Cinderella* 41.

Shine on, Cinderella!

Ruthie Martinez



Cast

Cinderella
Adalynn Eller

Prince Charming I
Paul Dargan

Queen Darling III
Alysse Miller

Stepmama
Amy Kemp

Henrietta
Zane Hassouneh

Gertrude
Zoe Dion

Fairy Godmother
Talia Rodriguez

Sugar (Fairy Helper)
Cameron Carpentier

Spice (Fairy Helper)
Tyler Yeatts

Pages
Lily Purse (*Fairy Godmother u/s*)
Nicole Cooper-Williams (*Cinderella u/s*)

Mouse/Ponies/Children's Ensemble
Ash Hall
Ice Hall
Mary Brown
Taylor Sparrow

Adult Ensemble
Zion Clarke (*Fairy Helper u/s*)
Nehemiah Ogbonna-Fulton
Ayan Rahman (*Prince Charming u/s*)
Karen Morgan Williams (*Stepmama u/s*)
Elena W Willis (*Queen, Stepsisters u/s*)

Production Team

Director
Ruthie Martinez

Music Director
Christian L. Stahr

Choreographer
Jose Rondon Jr.

Costume Designer
Vicki Olson

Lighting Designer
Darby E. Madewell

Sound Designers and Engineers
Craig Johnson
Jonathan Kilom

Props Designer
Denise Schumaker

Stage Manager
Chris Acevedo

Production Manager/Technical Director
Dennis R. Berfield

Assistant Technical Director
Ali Wood

Costume Shop Manager/Resident Costume Designer
Jenny Mitchell

Scenic Painters
Shannon Clarke
Hope Hammond

Associate Lighting Designer
Dustin Bowles

Production Team

Assistant Stage Managers

Fox LaLeaf
Sonya LaLeaf

Dramaturg
Rayden Leeder

Mouse Nanny
Marie Berry

Team Dynamics Strategist
Kristina Brunelle

The Royal Orchestra

Musical Director/Keyboard
Christian L. Stahr

Bass
Susannah Longest

Clarinet
Kathryn Brown

Trumpet
Adah Morton

Percussion
Scott Lane

Violin
Levi McLaughlin

ALL LOCAL ALL MORNING



CHRIS LOVINGOOD

RENEE CHOU

ELIZABETH GARDNER

WRAL NEWS
MORNINGS

4:30-7:00AM

WRAL NEWS
FOX 50

7:00-10:00AM

Program Notes

Every magical journey begins with a wish made from the heart; a dream. A young girl who dreams of an adventure like the ones she reads in her book, to the boy who dreams to find love with a girl whose heart runs free. For those who are kind, brave, and have a creative spirit within them, a fairy godmother awaits to help make their dreams come true!

A tale as old as time. We all know the story of the kind hearted girl and her wicked step family who has the chance to live out her dreams, but only until midnight. This story has existed as far back as 7BC as an oral folk tale, before later being put to writing in 1697 with “Cendrillon” in 1697. The story would then become “Aschenputtel” in the Grimm Brothers Fairy Tales in 1812, the version of the story many of us are familiar with. From there, this story will go on to become the iconic Disney movie we all know and love, and has since gone on to spawn many more adaptations.

Raleigh Little Theatre decided to present their own spin on the classic tale over 40 years ago, and this beloved story has now become a holiday tradition within the theatre and the greater Raleigh community. What is it about Cinderella that has continued to delight audiences for all these years?

It is not often you see a character whose greatest strength comes from their kindness. Cinderella is able to inspire audiences with her kind heart and resilience, rising above the problems she faces with patience and generosity. No matter the challenge, Cinderella faces it head on through showing kindness to all and having faith in her heart to guide her through life. It's Cinderella's ability to be loving and selfless to others that makes an impact not only on the Fairy Godmother, but on all those who have seen her story. Kids and adults alike can look to Cinderella as a role model for how we can be gracious and helpful to one another to create a better world where we build each other up instead of tearing each other down. Cinderella teaches audiences that kindness is a strength and having a good heart will always take you farther than selfishness ever could.

Raleigh Little Theatre's adaptation adds on to these qualities by shining a light on Cinderella's imagination. In this story it is not only her heart that takes her far, but her mind and what she is able to do with it. Cinderella teaches us the power of creativity and all the incredible things we can accomplish if we only believe in our ideas. We learn that opening our minds to new ideas through reading helps us see the magic in the world, and our creativity lets us make our own magic to share with others. Audiences can learn from this Cinderella the true power that comes from reading and letting our imagination run wild.

Every magical journey begins with a wish made from the heart; a dream. But a dream can only go as far as we let it, and Raleigh Little Theatre's Cinderella teaches us that true magic comes from within, and all it takes is faith, heart, and the willingness to follow your imagination to turn your dreams into a wish come true.

Word Search



Cinderella Word Search



G	S	D	N	A	W	C	I	G	A	M	S	C	Y
L	P	T	L	I	B	R	A	R	Y	I	S	G	I
A	M	U	E	T	D	A	N	C	E	Y	I	T	I
S	G	N	M	P	P	O	L	K	A	D	G	G	E
S	O	Y	M	P	S	N	S	I	R	I	N	G	D
S	D	T	I	B	K	I	T	G	S	P	A	M	C
L	M	I	D	C	R	I	S	T	A	I	T	A	I
I	O	V	N	C	S	I	N	T	R	I	Y	R	G
P	T	I	I	C	T	M	G	R	E	R	O	I	I
P	H	T	G	G	P	M	A	T	R	R	E	S	I
E	E	A	H	N	L	C	I	S	G	U	G	T	N
R	R	E	T	B	A	T	W	O	M	C	C	M	I
T	I	R	I	M	A	G	I	N	A	T	I	O	N
N	E	C	I	P	G	N	I	M	R	A	H	C	M

STEPSISTER
 CREATIVITY
 IMAGINATION
 POLKA
 CARRIAGE
 MAGIC WAND
 GLASS SLIPPER
 MIDNIGHT
 DANCE
 LIBRARY
 GODMOTHER
 CHARMING
 PUMPKIN



Cast Biographies



MARY BROWN (Mouse/Pony/Children's Ensemble), age 11, is so excited to be in *Cinderella* at Raleigh Little Theatre, her second time in the show! Recently she played Ivanka in *Once* at Burning Coal, the *Tuck Everlasting* ensemble with Cary Applause, *Moana* with Melendez Theatre and Entertainment, and Princess Winnifred in *Once Upon a Mattress* with Live Kids Theatre camp. Mary would like to thank everybody supporting her through each show... directors, friends, and family.



CAMERON CARPENTIER (Sugar) attends Durham School of the Arts and has performed with Cary Players and North Raleigh Arts and Creative Theatre. Cameron is grateful for the experience gained at Starbright Youth Theatre and Durant Road Musical Theatre and is also grateful to Actors Training Ground and Moonlight Stage Company for acting training, One Music Stand for vocal training, and the UNC School of the Arts' summer intensive. Enjoy *Cinderella*!

Cast Biographies



ZION CLARKE (Ensemble, u/s Fairy Helper) is making his debut at Raleigh Little Theatre with *Cinderella*, and he is very excited! Prior to moving to North Carolina, Zion lived in a small town called Galesburg, Illinois, where he did theatre for Knox College and Prairie Players Civic Theatre. His favorite role to date has been Christopher in *The Curious Incident of the Dog in the Nighttime*. He hopes you have a marvelous, magical time! IG: @zion_the_actor



NICOLE COOPER-WILLIAMS (Page/Ensemble, u/s Cinderella) is thrilled to make her Raleigh Little Theatre debut in *Cinderella* and would like to thank Raleigh Little Theatre for this wonderful experience and opportunity. Past credits include Ensemble in *Ada and the Engine* at NCSU, Sanchez in *Peter and the Starcatcher* at NCSU, and many more! Nicole hopes you all enjoy the show!



PAUL DARGAN (Prince Charming I) is from Durham, NC, and is a Theatre Performance graduate with honors from NCCU. Previous show credits include Police Capt., Judge (*The Producers*), Ralph (*A Need Fulfilled*), and Chevalier (*Abolition*). When free time is an option, his hobbies are volunteering for non-profit organizations and moving furniture for customers. He hopes everyone in the audience finds joy in tonight's show. A big thank you to the hard-working crew for an incredible production.

Cast Biographies



ZOE DION (Gertrude) is a 24-year-old film editor from Raleigh. They grew up seeing RLT's *Cinderella* and met their first voice teacher Alison Lawrence at auditions when they were nine. This is Zoe's first theater production in seven years, and they are absolutely delighted to be a part of this Raleigh tradition. Zoe wants to thank their wonderful parents Lisa and John for being so supportive and their friend Ebie for encouraging them to try out.



ADALYNN ELLER (Cinderella) is a voice/piano teacher originally from Roanoke, VA, thrilled to make her Raleigh Little Theatre debut! She recently received her Master of Music in Vocal Performance (Musical Theatre) and an Advanced Certificate (Vocal Pedagogy) from New York University, as well as a Certificate of Vocology from the Summer Vocology Institute. Some of her favorite credits include Burning Coal Theatre Company's *Oakwood Cemetery Series* (Jean/Ensemble) and *The 25th Annual Putnam County Spelling Bee* (Logainne) at NYU.
www.adalynnell.com



ASH HALL (Mouse/Pony/Children's Ensemble) is thrilled to be part of *Cinderella* 41. She has been taking voice lessons at Alli Mae Carnes Studio, dance lessons at North Carolina Dance Institute, acting lessons at Moonlight Stage Company, and was trained at North Carolina Theatre Conservatory previously. Some of her credits include *Into the Woods* (Little Red) at NCTC; *James and the Giant Peach* (Ladahlord) at AMCS; and *Newsies* (Crutchie) at Starbright Youth Theatre. IG: @ash.zenzoo

Cast Biographies



ICE HALL (Mouse/Pony/Children's Ensemble) is a 5th grader at Powell Elementary. She has been taking voice lessons at Alli Mae Carnes Studio, dance lessons at North Carolina Dance Institute, acting lessons at Moonlight Stage Company and was trained at North Carolina Theatre Conservatory previously. Past credits include *Into the Woods* (Little Red) at NCTC; *James and the Giant Peach* (Earthworm) at AMCS; and *Les Miserables* (Gavroche) at Enloe High School. Enjoy *Cinderella* 41! IG: @ice.zenzoo



ZANEH HASSOUNEH (Henrietta) is making her debut at Raleigh Little Theatre in this year's production of *Cinderella*! They hope to pursue a career in theatre one day. Some notable roles for Zaneh include Calvin in *A Wrinkle In Time*, Klytemnestra in *Elektra*, and Sir Edward Clarke in *Gross Indecency*, all at UNC Asheville. They are very grateful for all of you coming and spending your holiday with us for this magical tradition and hope you enjoy the show!!



AMY KEMP (Stepmama) is thrilled to be continuing her Villain Era and making her Raleigh Little Theatre debut! Recent roles include Miss Hedge in *Everybody's Talking About Jamie* (NRACT), Mrs. Whitstein in *Ragtime* (McGregor Hall), and Kate in *Oklahoma* (UNCG). When not in the theatre, she can usually be found scaring small children at the public library. Many thanks to friends and family for their constant love and support!

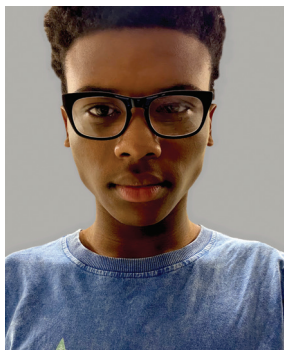
Cast Biographies



ALYSSE MILLER (Queen Darling III) is a 2024 graduate of Lee University with a degree in Theatre and a minor in Musical Theatre. Recently married, she has relocated to North Carolina and is thrilled to begin this new chapter. Alysse is excited to bring meaningful stories to life on stage. Grounded in faith, she is passionate about using her God-given talents to inspire others and glorify Him through the arts. Connect with her on Instagram: @alysse_nadine



KAREN MORGAN WILLIAMS (Ensemble, u/s Stepmama) is honored and humbled to return to the RLT Cinderella family. It has been an extraordinary experience working with this amazing group of talented actors and crew. Karen's recent musical theatre credits include *Hands On A Hardbody*, *Annie*, *Memphis*, *Assassins*, *Into The Woods*, *Sweeney Todd*, *Fiddler On The Roof*, *Little Women*, and *Gypsy*. Other recent credits include *Doubt*, *Misery*, *August: Osage County* and *Macbeth*. Karen wants to thank her family and friends for their support.



NEHEMIAH OGBONNA-FULTON (Ensemble) is a 15-year-old student at North Wake Early College and Career Academy. This marks his Raleigh Little Theatre debut. He has previously performed in *Newsies* and *High School Musical* at Neuse River Middle School and has trained in acting through programs such as the Back To One acting class. Nehemiah is passionate about performing and aspires to build a career as an actor.

Cast Biographies



LILY PURSE (Page/Ensemble, u/s Fairy Godmother) is so excited to be making her Raleigh Little Theatre debut in *Cinderella*! She is a junior at North Carolina State University studying English with a concentration in creative writing and would like to work as a songwriter in the future. This will be her first theatre production since middle school, and she is grateful for the opportunity to get back into it. She thanks her friends and family for always supporting her.



AYAN RAHMAN (Ensemble, u/s Prince Charming) is thrilled to make his Raleigh Little Theatre debut. Ayan is a junior at Athens Drive High School, a dedicated young performer and a talented singer. He's grown up loving the stage and has built real confidence as a vocalist through performances at talent shows and other live events. Ayan stays involved in theatre and creative work at school, where he helps build spaces for young artists.



TALIA RODRIGUEZ (Fairy Godmother) is thrilled to be joining her first Raleigh Little Theatre production! Talia has previously been in *Around the World in 80 Days*, *Little Shop of Horrors*, and *Fiddler on the Roof* at NCSU. Singing and performing are her passions - from arias about kitchen cabinets as a kid to making Ella's dreams come true today. Talia also is a video producer (portfolio: [taliancrodriguez.myportfolio.com](https://www.taliancrodriguez.myportfolio.com)). She thanks her family, friends, and her glorious best friend/fiancé for supporting her always.

Cast Biographies



TAYLOR SPARROW (Mouse/Pony/Children's Ensemble) is a third grader and delighted to be making her Raleigh Little Theatre debut! Past performances include St. David's School's production of *Matilda* (children's ensemble) and TRACT's *Frozen Kids!* (Queen Iduna). Taylor feels blessed to have this opportunity! She thanks her family, friends, David McClutchee, Rose Everett, Cyndi Romero, and Jennifer Paschal for their support. Thank you to the *Cinderella* cast, crew and directors for making this a dream come true!



ELENA W WILLIS (Ensemble, u/s Queen Darling, Stepsisters) is so excited to be making her debut with Raleigh Little Theatre for this year's production of *Cinderella*. Elena is a senior at NC State, pursuing a bachelor's in criminology and a minor in history. She has been in a wide variety of shows near her hometown of Davidson, NC, and is so glad to be back in the theater after taking a break to pursue her education in Raleigh.



TYLER YEATTS (Spice) is thrilled to return to Raleigh Little Theatre, where he previously appeared as Geyser in *Mad Libs Live!* Tyler earned a B.A. in Communication Studies from Campbell University with concentrations in Broadcasting and Public Relations. Past roles include Roo in *Winnie The Pooh*, Pig Pen in *Charlie Brown Christmas*, and Tartuffe in Moliere's *Tartuffe*. He enjoys playing the guitar and making songs, spending time with family, and relaxing with a great sitcom or movie.



marketing • print • signs
of Raeligh

Where business goes to grow.®
Your Complete Marketing and Printing
Services Provider



7209 Creedmoor Road, Suite 103 • Raleigh, NC 27613

Phone : 919.846.6000

customerservice@pip.com

www.piprdu.com

Production Team Biographies

RUTHIE MARTINEZ (Director) is so excited to be back at Raleigh Little Theatre, where she began performing as a teenager. Ruthie earned her undergraduate degree in drama from UNC-CH and her MFA from UNCG. She has worked extensively in theatre education. She ran the arts and drama programs for over 20 years at Greensboro Day School, and has also taught at the college level at multiple community colleges, Salem College, and Appalachian State, as well as teaching K-12. She also teaches regularly in the education programs at RLT. As a performer, some of her favorite recent roles have included the Chaperone in *The Drowsy Chaperone*, Rosie in *Mamma Mia*, and Clairee in *Steel Magnolias*. Her favorite role at RLT was the title role in *Gypsy* in 1981, and most recently she was featured in *Blood Wedding*.

CHRISTIAN L. STAHR (Music Director & Orchestrator) is delighted to return to Raleigh Little Theatre as Music Director and Orchestrator for a magical production of *Cinderella* 41. At Burning Coal Theatre, he has served as Music Director for *Once*, *Merrily We Roll Along*, *A Little Night Music*, and *Sunday in the Park with George*, and as Composer for *Copenhagen*. For PlayMakers Repertory Company, he was Music Director for *Pippin*. In Norway, Christian composed and music directed the musicals *St. Olaf the Lucky One* and *4Real*. In New York City, he served as Director of Culture at the Norwegian Seamen's Church and Pianist for the Dramatists Guild Fund. He holds an MFA in Musical Theatre Writing from NYU's Tisch School of the Arts. Christian is thrilled to help bring the magic of *Cinderella* to life once again alongside this fantastic cast and crew. Grateful for the love and support of family and friends - especially his wife, Sarah Lynn Winter, and their cats, Dwight and Norman. www.stahrmusic.com

JOSE RONDON JR (Choreographer) is a member of Actors Equity Association and the Community Engagement & Education Coordinator for DPAC. His work has been featured at the NBTF and JTF. Favorite choreography credits: *Songs for A New World* (NCT), *Spongebob the Musical*, *Rock of Ages* (UNCG), *Heathers the Musical* (NCT Conservatory), *Tarzan the Musical*, *Addams Family the Musical* (Heritage High), *It's A Hard Knock Life*, and *Pride Land* (The Pointe!). Favorite performing credits: *Mary Poppins*, *Spamalot*, and *Kinky Boots*.

Production Team Biographies

VICKI OLSON (Costume Designer) was a costume designer with Raleigh Little Theatre for 24 seasons. After receiving her MFA from UNC-G in 1985 she became RLT's first professional costume designer. Her creativity and fine work could be seen in countless productions including *Spamalot*, *Hairspray*, *Hedwig and the Angry Inch*, *Much Ado About Nothing*, and *Cinderella*. She has enjoyed working with so many talented and wonderful people.

DARBY E. MADEWELL (Lighting Designer) is thrilled to be a part of this fabulous production team and working with Raleigh Little Theatre again! Recent credits include lighting design for *Witch* and *Hadestown: Teen Edition* at RLT, *Hamlet* at Theatre in the Park, *Bright Star* at Pure Life Theatre Company, and the 38th, 39th, and 40th annual productions of *Cinderella* at RLT. Darby is an interdisciplinary artist with a decade of experience creating theatre as a lighting designer, projections designer, and stage manager. www.darbyemadewell.com

CRAIG JOHNSON (Sound Designer) is excited to be back at RLT. Earlier he served as Sound designer for *Cinderella 40* and Qlab Conductor for *Something Rotten*. During the day, he is a project manager in the pharmaceutical industry, but at night he can often be found at NRACT (and more recently also at RLT!) either on stage (*Southern Baptist Sissies*, *Brother Chaffey/Houston*), running tracks (*Everybody's Talking about Jamie*; *Fun Home*), or music directing (*Big Fish*). A huge THANK YOU and I LOVE YOU to his husband and other half of 30 years - Shawn!

JONATHAN KILOM (Sound Designer and Engineer) is deeply appreciative of the opportunity that Raleigh Little Theatre has given him to design and assist with bringing this production of *Cinderella* to life. Originally from Queens, New York, Jonathan has worked as a technician for over twelve years in cities such as New York, Baltimore, Washington DC, and now Raleigh. He has worked on a range of productions including theatre, concerts, dance recitals, and more. Jonathan now serves as Technical Director of Theatre at Longleaf School of the Arts, where he hopes to inspire the next generation of technical theatre artists with his passion for the art. He is very excited for this production and can't wait to take part in the next one!

Production Team Biographies

DENISE SCHUMAKER (Props Designer) has designed costumes, props and sets for theatre, dance, opera, and tours, plus film, television, and MrBeast, for 40 years. She was honored with an Emmy® nomination in 2010. Recent work includes *Polyfamy* on TLC, the horror film *Bloodspawn* (2024), *Cendrillon* for North Carolina Opera, *Mad Libs Live!* for Raleigh Little Theatre, and Raleigh Little Theatre's Theatre For the Very Young productions of *All Smiles* and *The Wheels on The Bus*.

CHRIS ACEVEDO (Stage Manager) is excited to be back for his third year of getting Cinderella to the Ball! His last Stage Management gig was with Pure Life Theatre's *The Waning Hours*. Chris would like to thank his friends, family, and YOU for continuing to support the arts!
IG: @livinglife1994

SHANNON CLARK (Scenic Painter) is delighted to return to work with the outstanding cast and crew of *Cinderella* 41! Shannon has worked as scenic designer/painter at the Raleigh Little Theatre since 2005. He retired after a 27-year career as a theatrical designer and theatre artist. Shannon is looking forward to designing the scenic elements for *1776*, which will be here at RLT in early spring 2026. See you at the theater!

HOPE H. HAMMOND (Scenic Painter) is excited to be back at Raleigh Little Theatre working with so many talented individuals. She has been a part of multiple productions over the past years as a scenic artist, most recently for *Kinky Boots*. When not at Raleigh Little Theatre, she can be found spending time with her family - preferably traveling!

FOX LALEAF (Assistant Stage Manager) loves working backstage at different theatres, either by building sets or working a show. *Cinderella* 41 will be their second time being a fairy helper (of the shadows that is)! When Fox is not at the theatre, you can find them on stage as Hummingbird, a drag performer!

SONYA LALEAF (Assistant Stage Manager) aka Theatre Gremlin is joyful to put a pumpkin on stage for a second year! Sonya loves riding around on their unicorn high up in the clouds. They would like to thank their parents for putting up with their silly goose ways, and Fox Fox for... hmmmm... I'm not sure. JK! Partying with them!

Production Team Biographies

DUSTIN BOWLES (Associate Lighting Designer) is thrilled to be on the production team for *Cinderella*... this time as a former cast member AND your Reigning Diva! Queen Darling and the Prince aren't the only ones with crowns around here! He works in Human Resources by day and is a theatre volunteer by night. Other free time is spent being an avid Carolina Hurricanes fan (LET'S GO CANES!). He thanks his family, friends, Darby, and RLT staff for their continued support!

MARIE BERRY (Mouse Nanny) has been involved with *Cinderella* for 24 years. First year as dresser, but since then she has been watching over the youngest of the cast members. When not involved with RLT, she enjoys knitting and competitive jigsaw puzzling. Thank you to all of my mice over the years and to Ruth who introduced me to theatre.

RAYDEN LEEDER (Dramaturg) is excited to be back at Raleigh Little Theatre for another show! Recent production credits include *Schoolhouse Rock Live!* (Dramaturg), *Akeelah and the Bee* (Dramaturg), *Cinderella 40* (Dramaturg), *I and You* (Director), and Lynn Nottage's *Sweat* (Asst. Director/Dramaturg). Rayden would like to thank all the cast and crew for all the love put into this show to make it so magnificent!

KRISTINA BRUNELLE (Team Dynamics Strategist) is an Organizational Strategist and the founder of Momaging Made Easy, where she equips parents - especially moms - with the tools and confidence to guide their young actors through the often-overwhelming world of auditions, self-tapes, and casting. Her professional work focuses on helping leaders and teams thrive through purposeful conversations that build trust and connection, while her entrepreneurial work helps families navigate the business side of show business without losing their sanity. By night, she's an avid theatre-goer (likely in a row near you), and always grateful for the chance to support incredible casts and crews. Here's to a spectacular performance - on with the show! MomagingMadeEasy.com



ONE NIGHT ONLY!

BE THERE MAY 2, 2026, WHEN THE DIVAS TAKE THE STAGE FOR AN EXTRAORDINARY VEGAS-STYLE REVUE BENEFITING RALEIGH LITTLE THEATRE! ENJOY POWERHOUSE PERFORMANCES, A LIVELY RECEPTION, AND AN EXCITING SILENT AUCTION — ALL IN CELEBRATION OF COMMUNITY AND THE ARTS.



RALEIGH
LITTLE
THEATRE

SAVE THE DATE — MAY 2, 2026!

Royal Orchestra Biographies

SCOTT LANE (Drums/Percussion). Burning Coal Theatre: *Matilda*, *Merrily We Roll Along*. New Orleans Theatre: *West Side Story*. North Carolina Theatre: *Evita*, *Joseph and the Amazing Technicolor Dreamcoat*, *My Fair Lady*, *Hairspray*, *Dreamgirls*, *Singin' in the Rain*, *Seven Brides for Seven Brothers*, *Annie*, *Miss Saigon*, *Chess*, *Crazy for You*, *The Sound of Music*, *The Wizard of Oz*, *1776*, *Annie Get Your Gun*, *Man of La Mancha*. For US National Tour: *Hello*, *Dolly!*, *Ragtime*.

SUSANNAH LONGEST (Bass) is glad to be making her Raleigh Little Theatre debut. Previous credits include *Merrily We Roll Along* (Burning Coal Theatre), *Hairspray*, and *You're a Good Man, Charlie Brown* (Furman University Pauper Players). Outside of playing bass at church and with friends, she works at the NC Rural Center. Love and thanks to Patrick and Beanie.

LEVI MCLAUGHLIN (Violin) has spent decades playing professional and semi-professional concerts in the U.S.A., Japan, and his native Canada. When he's not playing violin in the pit, he is a professor of Asian religions at North Carolina State University.

Raleigh Little Theatre Staff Biographies

MICHELE WEATHERS (Producing Artistic Director) (she/her/hers) Previously: Executive Director and Senior Executive Advisor at Carolina Ballet (2017-2023), Managing Director at PlayMakers Repertory Company (2014-2016), Managing Director at Barrington Stage Company (Pittsfield, MA) and North Carolina Theatre (1991-2004). NYC credits include: *In the Heights*, *High Fidelity*, *Orson's Shadow*, and *Red Light Winter*. In 2019, she was recognized with TBJ's Women in Business Leadership Award and, in 2024, she was a member of the inaugural group of award winners for Raleigh Magazine's Impact 50. DEI workshops: artEquity and Emerging Equity. Michele is a member of the League of Professional Theatre Women. Her daughter, Peyton Rose, is a freshman at Michigan State University. Meredith College grad. She is incredibly proud of RLT's place in the community.

DENNIS R. BERFIELD (Production Manager/Technical Director) is from South Williamsport, Pennsylvania. He received degrees in Theater and Communication Studies at the Lock Haven University of Pennsylvania, and a Masters of Fine Arts in Scenic Design and Technology at the University of Massachusetts, Amherst. Dennis has worked at various regional and off-Broadway theaters as a Scenic Artist, Carpenter, Master Carpenter, Scenic Designer, Assistant Technical Director, and Scenic Coordinator. After working professionally for a number of years, Dennis became an adjunct professor at Millikin University in Decatur, IL, and went on to become the Technical Director at the University of Scranton in Pennsylvania.

Raleigh Little Theatre Staff Biographies

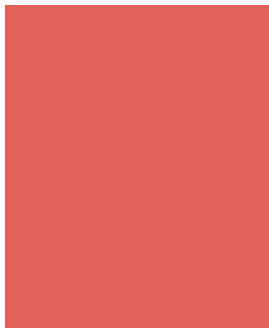
TERRA HODGE (Director of Education) (she/her) is the Director of Education at Raleigh Little Theatre. She received her Bachelor of Arts degree in Theatre Education from North Carolina Central University and her Master of Arts degree in Media Arts from Long Island University, Brooklyn Campus. Prior to joining RLT, Terra was the Theatre Arts teacher at Culbreth Middle School in Chapel Hill, North Carolina. She was named the 2017-2018 Culbreth Teacher of the Year and was named an Honor Teacher for Chapel Hill – Carrboro City Schools. Terra has worked as a teaching artist, actor, and director with many local theatre companies. She is the director of Agape Theatre Project's production of *Crowns* that was featured at the 2024 International Black Theatre Festival in Winston Salem, NC.

MEGAN FARRELL (Marketing Manager) joined the Raleigh Little Theatre team in August 2019. She holds a Bachelor's Degree in Business Administration with a concentration in Marketing from North Carolina State University. Megan grew up a theater kid and loves getting to "play" on the admin side of the performing arts now as an adult. When she's not at the theatre, Megan is likely cheering on the Dodgers, watching horror movies, or going on adventures with her tiny best friend (and inevitable future Mouse/Pony) Emmie.

MERCEDES RUIZ (Box Office & Front of House Supervisor) is thrilled to be a new addition to the RLT team! A long time attendee, Mercedes grew up seeing Cinderella annually with her grandfather. She later made her RLT debut as a Teacher's Assistant and actress, with credits including *A Year with Frog and Toad*, *Charlotte's Web*, *The Tempest*, and *Into the Woods*. A graduate of Elon University with a degree in Drama and Arts Administration, Mercedes has worked in patron services, education, development, and finance, with a focus on making theatre accessible to diverse audiences.

ARTS FOR ALL

Helping
to Create
Vibrant
Communities
Across
North
Carolina



Learn more at NCArts.org



@ncartscouncil



@ncarts



A message from your North Carolina Arts Council.

Raleigh Little Theatre

Staff Biographies

ALI WOOD (Assistant Technical Director) could be found both on-stage and backstage while she was growing up. From skits her grandfather wrote for church to performing at the local community theatre, Ali was always involved. However, during her college years, she found lighting and swapped over to the dark side. After graduating, Ali worked as an Entertainment Stage Technician for Walt Disney World and now she continues her career as the Assistant Technical Director here at Raleigh Little Theatre where she hopes to continue spreading the love and joy of theatre with everyone she meets.

DENISE SCHUMAKER (Associate Costume Shop Manager) has designed costumes, props and sets for theatre, dance, opera, and tours, plus film, television, and MrBeast, for over 35 years. She was honored with an Emmy® nomination in 2010. Recent work includes *Polyfamy* on TLC, the horror film *Bloodspawn* (2024), *Pippin* for Theatre in the Park, *The Marriage of Figaro* for NC Opera, *The Magic Flute* for Elon Opera Workshop, and RLT's Theatre For the Very Young production of *All Smiles*.

CANDACE SPENCER (Education Programs Specialist) is an accomplished African American theatre professional passionate about nurturing young artists. She holds a BA in Theatre from Greensboro College and an MFA in Theatre Performance from the University of Louisville. Candace has expanded her artistic perspective through a six-month study abroad program in London, where she explored theatre and dance. While pursuing her MFA, Candace gained four years of experience teaching introductory acting classes to undergraduates, and she developed on-camera acting skills during her undergraduate studies. She is skilled in drama instruction, on-stage and on-camera acting, and stage directing. Her dedication to youth development is not only evident in her teaching experience, but also in her work with young artists at a summer camp in Los Angeles, California. Candace's diverse training, experience, and love for theatre make her an invaluable asset to the RLT Education team.

Raleigh Little Theatre

Staff Biographies

EMMA CLEMENTS (Jack Hall Scholar) is a local director and producer. They are very excited to return to the RLT team for the 2025-2026 season as the Jack Hall Scholar! They recently graduated from UNC-CH, where they held several student leadership and production roles, including Executive Director of Production for Pauper Players' 2022-2023 season. Emma also serves as the Artistic Director for Boy With Box Theatre Company, a new small-budget theatre company in Chapel Hill.

MAGGIE GINA (Administrative Intern) is currently a junior at NC State majoring in Business Administration with a double minor in arts entrepreneurship and music performance. Since she first picked up a trumpet at age 9, she was immediately drawn to a world of music and creativity, helping her realize she needed the arts to be forever a part of her life! Maggie is very excited to be a part of RLT and is grateful for the chance to gain real-world experience in marketing/administration and see first hand what it means to bring a performance to life. When not in the theater, Maggie can usually be found spending time with friends and family, studying, or in and out of practice rooms.

Crews and Volunteers

Raleigh Little Theatre is grateful to the following individuals that have invested their time, skills, and expertise as part of our community of volunteers between November 7, 2024 - November 7, 2025.

ARCHIVES VOLUNTEERS

Alana Williamson	Julija Kolenceva
Catherine V. Lambe	Laurel Drobits
David Wilkinson	Mohoganey Hollowell
Jaye Bullock	

ASSISTANT DESIGNERS

Dustin Bowles
Chantal Brown

ASSISTANT DIRECTORS

Dan Bain
Lenore Clark
Metra Sheshbaradaran

ASSISTANT STAGE MANAGERS

Gavin Hamilon	Lauren Montana
Chastin Kornegay	Doc Price
Fox LaLeaf	Jada Smith
Sonya LaLeaf	Alyssa Wise

Crews and Volunteers

AUDITIONS CREW MEMBERS

Marie Berry	Tony Landavazo
Amy Blackwell	Denisse Lemos
Barbara Corbin	John Maruca
Linda Fetsko Depo	Elaine Petrone
Laurel Drobits	Heather Shinpaugh
Judy M. Dove	Michael Teleoglou
Judy Keyes	Karen Wahle
Catherine V. Lambe	

AUDITIONS CREW COORDINATOR

Marie Berry

CHILD ACTOR SUPERVISORS

Marie Berry	Lauren Matthews
Amy Blackwell	Patrice Waller
Bill Buckner	Amber Wilkes-Smith
Mohoganey Hollowell	Lindsey Wyatt

CAPTIONS CREW MEMBERS

Shruti Chavan	Chantea England
Jordan Cofield	Heidi York

IS YOUR STAR READY FOR THE SPOTLIGHT?

Helping Parents Navigate the Acting Journey with Confidence

From school plays to professional auditions, helping your child shine takes more than talent.

That's where
Momaging Made Easy
comes in.

Grab Your **Free**
Resource:
*The Ultimate Self-Tape
Checklist for Parents*

Learn the gear, setup, and
steps you need to help
your child land auditions
that get noticed.



SCAN HERE OR VISIT:

WWW.MOMAGINGMADEEASY.COM

Momaging Made Easy | Supporting Your Star Every Step of the Way

Crews and Volunteers

COSTUME SHOP CREW MEMBERS

Sofia Albahrawy	Barbara Corbin
Matthew Anderson	Robin Crowell
Liz Armbruster	Petra Crowe
Kai Arroyo	Laurel Drobits
Lydia Aulisi	Susanna Edwards
Andrea Axtell	Sarah Felts
Paola Barbesino	Lisa Flores-Wolfert
Mardy Bell	Janice Freeman
Marie Berry	Sam Frigerio
Ruth Berry	Sophie Gardner
Barbara Biggs	Samuel Geist
Betsy Boyd	Troysha Giggans
Evangeline Bowe	Lea Goldstein
Millie Bozek	Laurel Gregory
Clancy Bradbury	Shannon Hahn
Chantal Brown	Ann Haigler
Michaela Brown	Mohoganey Hollowell
Jaye Bullock	Gloria Hope
Emerson Bulluck	Liz Houde
Ann Burke	Hannah Hudyncia
Grey Burns	Gwen Johnson
Alyssa Capps	Victoria Kalendra-Frystak
Beth Castle	Mallory Koerner
Myrakle Caston	Julija Kolenceva
Saphfire Cook	Maitreyee Kulkarni
Sheridan Cooke	Catherine V. Lambe

Crews and Volunteers

COSTUME SHOP CREW MEMBERS

Anne Langdon	Will Saponara
Michaela Langley	Mallory Schultz
Lindsey Lee	James Shaw
Barbara Leimgruber	Heather Shinpaugh
Timothy Locklear	Dillon Shorter
Ana Louis	Eleanor Silver
Stephanie Lu	Jada B. Smith
Jay Mack	Nicole Solera
Aja Maltin	Heather Standish
Kathy Mauney	Alex Stevens
Bonita McPherran	Pam Swanstrom
Heather Meadows	Laura Sweeney
Josie Milner	Stephanie Toney
Kelley O'Byrne	Lara West
Jessica Pecor	Julia Whitfield
Nancy Pennington	Wren Wick
Jill Pownall	Alana Williamson
Karina Prut	Liz Winfrey
Cynthia Ramos	Becca Woltz
Maggie Rasnick	
Leanne Richbourg	
Nayeli Rios-Guzman	
Aleena Rivera	
Sue Rudkin	
Alyssa Sanders	

**WE SERVE
SCHOOLS**

**WE FUND ARTISTS &
ARTS ORGANIZATIONS**

**WE CREATE
COMMUNITY**



**UNITED
ARTS**
WAKE COUNTY

Building a better Wake
County through the
support of and
advocacy for the arts

This production was made possible
with support from United Arts.

unitedarts.org

Crews and Volunteers

DECK CREW MEMBERS

Nmesomachim Ani	Amy Keyworth
Fidel Benton	Fox LaLeaf
Jorge Betancourt	Sonya LaLeaf
Yusha Bey	Tony Landavazo
Gary Bossert	Andrew Laughter
Dustin Bowles	August LeBlanc
Peri Boylan	Robby Levenson
Ebie Britt	Joey Lloyd
Charlie Chappel	Zoe Luglan
Jordan Cofield	Dani Miano
Chris Crowe	Lauren Montana
Petra Crowe	Michael Parrill
Shiri Dayan	Veronica Passarelli
Anakin Ducheneaux	Amy Plahuta
Bri Flynn	Doc Price
Samantha Gallup	Katherine Shauger
Whitney Glomb	Metra Sheshbaradaran
Lea Goldstein	Ray Siminski
Alex Gromo	Aubrey Thomas
Sadie L. Harper	Natasha Tyson
Mohoganey Hollowell	Renee Vessels
Gloria Hope	Lara West
Essie Horne	Heidi York
Victoria Kalendra-Frysta	
Ryan Jones	

Crews and Volunteers

DRESSER CREW SUPERVISORS

Beth Castle

Jennifer Dai

Lindsey Wyatt

DRESSER CREW MEMBERS

Marie Berry

Kat Lanier

Amy Blackwell

Karen Matthews Lee

Beth Castle

Jessica Pecor

Petra Crowe

Amy Plahuta

Jennifer Dai

Helen Remington

Kendra Drylie

Dillon Shorter

Mohoganey Hollowell

Jamie Smith

Essie-Richelle Horne

Sophie Thibodeaux

Savannah Johnson

Lindsey Wyatt

FIRE WATCH MEMBERS

Gary Bossert

Dustin Bowles

Marc Macenko

Thomas Matrejek

Lauren Montana

Lara West

Crews and Volunteers

FLY CREW MEMBERS

Nmesomachim Ani

Yusha Bey

Peri Boylan

Jordan Cofield

Chris Crowe

Shiri Dayan

Bri Flynn

Samantha Gallup

Gloria Hope

Ryan Jones

Fox LaLeaf

Sonya LaLeaf

Tony Landavazo

Joey Lloyd

Daniel McKay

Amy Plahuta

Simone Pohlman

Doc Price

Katherine Shauger

Ray Siminski

Natasha Tyson

Zara Van Hemert

Lara West

Crews and Volunteers

LEAD USHERS

Gary Bossert	Amelia Lumpkin
Kristina Brunelle	Lilo Miles
Judy M. Dove	Chanté Thompson
Michael Dunavan	Lindsey Wyatt
Amy Hellmers	

LIGHTING CREW MEMBERS

Gary Bossert	Janaya Farrar	Paisley McIntyre
Dustin Bowles	Laurel Feldner	Lauren Montana
Chantal Brown	Lea Goldstein	Tom Normanly
Maggie Brown	Gavin Hamilton	Veronica Passarelli
Charlie Chappel	Violet Hellmers	Elaine Petrone
Shruti Chavan	Darby High	Amy Plahuta
Sapphire Cook	Gloria Hope	Doc Price
Barbara Corbin	Ryan Jones	Katherine Shauger
Petra Crowe	Beth Kirby	Bob Tomasulo
Shiri Dayan	Catherine V. Lambe	Lizzy Yingling
Anakin Ducheneaux	Cathryn Lampus	Heidi York
Chantea England	Michael Lewis	

PROPS CREW SUPERVISORS

Catherine V. Lambe

Crews and Volunteers

PROPS CREW MEMBERS

Sofia Albahrawy	Joss Kagarise
Chloe Allen	Victoria Kalendra-Frysta
Liz Armbruster	Sonya LaLeaf
Mary Auen	Catherine V. Lambe
Yusha Bey	Morgan Lamps
Gary Bossert	Cathryn Lampus
Dustin Bowles	Michaela Langly
Angelica Bridges	Zoe Luglan
Shruti Chavan	Lauren Montana
Chris Crowe	Veronica Passarelli
Petra Crowe	Amy Plahuta
Denver Dan	Simone Pohlman
Michael Dunavan	Doc Price
Whitney Glomb	Metra Sheshbaradaran
Kaylee Hahn	Carolyn Shi
Gavin Hamilton	Michael Teleoglou
Violet Hellmers	Sophie Thibodeaux
Manika Hemmerich	Renee Vessels
Darby High	Lara West
Mohoganey Hollowell	Ezra Zhang
Michael Jernigan	

Crews and Volunteers

SCENE SHOP CREW MEMBERS

Chloe Allen	Gillian Coats	Derrick Grooms
Nmesomachim Ani	Jordan Cofield	Graham Guzynski
Mary Auen	Caden Connor	Gavin Hamilton
Lydia Aulisi	Saphfire Cook	Mariam Hattab
Julianna Babcock	Sheridan Cooke	Joseph Heil
Brenda Bailey	Brett Cooper	Violet Hellmers
Fidel Benton	Joe Cordaro	Samuel Hill
Yusha Bey	Chris Crowe	Mohoganey
Haritha Bhatta	Shiri Dayan	Hollowell
Gary Bossert	Nic DeBruin	Gloria Hope
Rebecca Beaulieu	Michael Dunavan	Cindy Hughey
Dustin Bowles	Susanna Edwards	Eric Jensen
Peri Boylan	Raesha Emerson-	Cat Johnson
Chantal Brown	Cook	Emma Kirkner
Dylan Bruchhaus	Chantea England	Maitreyee Kulkarni
Jennifer Bryant	Larry Fantozzi	Fox LaLeaf
Bill Buckner	Kathleen Friedley	Sonya LaLeaf
Enya Burningham	Stephen Furs	Cathryn Lampus
Grey Burns	Samantha Gallup	August LeBlanc
Joe Burns	Jaden Gaskin	Chantell LeFaye
Alanya Campbell	Troysha Giggans	Lacey Lewis
Victoria Centeno	Whitney Glomb	Trystan Luongo
Charlie Chappel	Lea Goldstein	Kaitlyn Macenko
Joseph Citta	Matthew Graham	Marc Macenko

**Raleigh Little Theatre productions are driven by our volunteers.
There are countless ways you can get involved, with any skills
(or desire to learn new skills) you have, including:**

Teaching Assistant

Help our Teaching Artists with classes in our education programs and camps for youth!

Costume Shop

Learn or use your existing skills in sewing, costume repair, hat/mask making, wig styling, and more to help make our productions' costumes!

Scene Shop

You can l Learn or use your existing skills in construction, fly rigging, painting, and more to help bring our sets to life.

Acting

Put a character and a show on its feet!

Visit *RaleighLittleTheatre.org/Auditions* for upcoming opportunities.

Lighting, Sound, Props, Deck, and Dresser Crews

Create "theatre magic" by working to make all of the elements of a show happen on time!

Assistant Stage Manager

Relay information between the Stage Manager, actors, and backstage crews in real time so each show runs smoothly and efficiently.

Assistant Director

Help the director make the show happen!

Usher/Concessions

Welcome audience members, scan tickets, sell concessions, and help patrons find their playbills and seats.

House Manager

Coordinate and manage all of the moving pieces of audience arrival, departure, and experience during their time at the theatre.



**RALEIGH
LITTLE
THEATRE**

Visit **RaleighLittleTheatre.org/Volunteers**
or scan the QR code to learn more about
volunteering at RLT and sign up for our
email list. We hope to see you soon!



Crews and Volunteers

SCENE SHOP CREW MEMBERS

Jay Mack	Naomi Perino	Matt Steindl
Melody Markert	Ann Perry	Rogelio Sullivan
Grace McCarthy	Elaine Petrone	Sophie Thibodeaux
Samuel Mccraw	Amy Plahuta	Aubrey Thomas
Jeff McDermott	Nia Porter	Kristina Thomas
Amy Meller	Galina Potepalov	Alison Thompson
Kaitlin Merlino	Emma Powers	Bob Tomasulo
Alexandria	Jill Pownall	Blaise Tucker
Mikolasko	Jacob Presson	Natasha Tyson
Don Miller	Daniel Rapuano	Meoshia Wallace
Nasseer Naji	Heath Roberts	Alephie White
Jeff Nugent	Caitlin Romig-Koch	Wren Wick
Ethan Onkundi	Jeffrey Scroggs	Alana Williamson
Livia Onkundi	Katherine Shauger	Michelle Wood
Sophie Orlet	Carolyn Shi	Selah Woodhead
Paul Orsertt	Raymond Siminski	Lizzy Yingling
David Oyler	Sarah Sinawi	Ezra Zhang
Veronica Passarelli	Jamie Smith	Toby Zuiderhof
Honey Patel	Dave Sniffin	
Jessica Pecor	Jake Standish	

Crews and Volunteers

SOUND CREW MEMBERS

Sam Beck	Michael Lewis
Jorge Betancourt	Logan MacDonald
Angelica Bridges	John Maruca
Natalie Brooke	Paisley McIntyre
Chantal Brown	Lauren Montana
Elizabeth Capps	Tom Normanly
Shruti Chavan	Amy Plahuta
Saphfire Cook	Karina Prut
Barbara Corbin	Katherine Shauger
Chris Crowe	Micah Shelton
Sarah Doering	Metra Shesbaradaran
Chantea England	Joe Swain
Lea Goldstein	Bob Tomasulo
Ryan Jones	Rachel Ward
Victoria Kalendra-Frysta	Selah Woodhead
Jared Kirkpatrick	Lizzy Yingling
Catherine V. Lambe	Heidi York
Robby Levenson	

For more information about volunteering at RLT,
contact Cari by email at Cari@RaleighLittleTheatre.org
or via telephone at 919-821-4579 x 232.

★ *Empire Eats* ★

Restaurants!

We've been called a lot of things,
but ordinary isn't one of them



empireeats.com

2025-2026

Board of Directors

Steve Epstein
(President)

Betsy Ludwig
(Vice President)

Amelia Lumpkin
(Secretary)

Clifton M. Cates III
(Treasurer)

Gene Cordon

Judy M. Dove

Rudra Dutta

Barbette Hunter

Safiyah Jackson

Carol Machuca

Heather Mintz

Marquita Robertson

Suzanne Ruggles

Phillip Bernard Smith

Mark Steward

Victoria Wheeler

Michael Dunavan
(Volunteer Rep)

Caitlin Poe
(Board Attorney)

Raleigh Little Theatre *Staff*

Producing Artistic Director

Michele Weathers

Production Manager/Technical Director

Dennis R. Berfield

Director of Education

Terra Hodge

Costume Shop Manager/Resident Costume Designer

Jenny Mitchell

Marketing Manager

Megan Farrell

Box Office & Front of House Supervisor

Mercedes Ruiz

Assistant Technical Director

Ali Wood

Associate Costume Shop Manager

Denise Schumaker

Education Programs Specialist

Candace Spencer

Box Office Associates

Jackson Griffin

Jada Smith

Joel Schaer

Morgan Harris

Nic Johnson

Jack Hall Scholar

Emma Clements

Administrative Intern

Maggie Gina

Donors

1936 LEGACY SOCIETY

Anonymous (2)
Charles W. Burton, Jr.
Carlie Huberman
Adrienne Lumpkin
Velvet Rattelade
Clifford and Janet Raynor
Donald and Bonita Scott
Leigh Ann Wilder and John B. Holding
David and Judi Wilkinson

Raleigh Little Theatre is grateful to the following individuals, companies and private and public funding agencies that have invested in live, community theatre and arts education. This list reflects gifts to the general needs of the theatre of \$100 or more between November 7, 2024 - November 7, 2025.

CORPORATE PARTNERS

Capital Broadcasting Company/WRAL TV5
The Cardinal at North Hills
Coastal Credit Union
Crawley, Lee & Company
Link by Link
North State Bank
WALTER Magazine

Donors

FOUNDATION AND GOVERNMENT PARTNERS

Capital City Civitan Club

Charles W. Gaddy and Lucy Finch Gaddy Endowment Fund

City of Raleigh Arts Commission

Find Your Light Foundation

Floyd Family Foundation

Hubie Poteat Memorial Scholarship Fund

John Rex Endowment

John William Pope Foundation

Julia and Frank Daniels, Jr. Endowment Fund of Triangle Community
Foundation

Maurer Family Foundation

North Carolina Community Foundation

Talk It Out NC

The Irene Ryan Foundation

The Jandy Ammons Foundation

The W. Trent Ragland Foundation

The Warner Fund

United Arts Council of Raleigh & Wake County



4351 The Circle at North Hills
Raleigh, NC 27609
919.856.0604 - edibleartnc.com

Donors

MARQUEE CIRCLE – \$5,000+

Chuck & Nancy Crew
Diane Cain Fiduccia
Eileen & Michael Hendren
Mindtracs
Jim and Cantey Tanner

FITZ-SIMONS SOCIETY – \$2,500+

John Adams
Ruth Bromer & Joseph Huberman
Peter & Nancy Watkins Dimitrios*
Georgia & Alec Donaldson
Chancy & Keith Kapp
Catherine V. Lambe
David Watts & Kiron Rakkar*
Victoria Wheeler

PRODUCER – \$1,000+

David and Carol Carlson
Mickey Fearn
Stephen Furs
Rob & Linda Grew
Charles & Cheryl Hall
Leslie Ann Jackson
Amelia Lumpkin Household*

Donors

PRODUCER – \$1,000+

Maggie & Michael McGee*^

Phyllis Parish & Seab Howard

Mary Anne Payne

Clifford & Janet Raynor^

Robert & Connie Shertz

Michele M Weathers

David Wilkinson

Steve and Lisa Zaytoun

DIRECTOR – \$500+

Anonymous

Kathleen Burkett^

Roy and Kristin Cooper

Gene Cordon

Rudra Dutta^

Ruth Freeman

Jean Gross & Don Miller^

Kathleen Curie Hall

Meredith Howland

Alan Hymowitz & Olivia Fried

Jeanette Jackson^

Betsy Ludwig

Greg Moore & Kevin O'Barr

Bonnie & Don Scott

Donors

DESIGNER – \$250+

Jenny Anglum
Robyn Bissette
Amy Blackwell^
Kylee Bloodworth
Ross Clay
Tama Coleman
Barbara Corbin
Rebecca Crosson
Denise deLaRue
Ken and Cindy Denison
Tony & Elli Gemma
Terry Haggerty^
Adrienne Kelly-Lumpkin
Kathy Mauney^
Heather Mintz
Charles J. Phaneuf
John Riedy
Joyce Rothchild^
Dena & Charles Silver
Theodore Smyth
Charlotte & Brian Sweeney
Mark Tulbert & Rob Maddrey
Cynthia Urquhart

Donors

ACTOR – \$100+

Thomas Acker
Lee & Sunny Allen
Carolyn Anderson
Michelle Bamford
Marc Bookman
Greg & Laura Bottomley
Bill & Sandra Boyd
Jim Burnette & Stephen Davis
Sylvia Burns
Colleen Castro
Clifton Cates
Ashwin Cattamanchi
Dr. Kenneth W. Chandler & Ms. Glynis E. Hill-Chandler
Lyman Collins & Donald Davis
Teresa & Charles Cramer
Renee Crowson
Holly Crumpler
Bob & Linda Cyrus
Lorraine Diamond
Judy & Kent Dove
Tom & Peggy Eifler*
Herman Ferguson
Amy Flynn & Phil Crone
Linda George
Ellen & Larry Goode

TAKE A BOW!

RLT'S 2026 WINTER/SPRING THEATRE CLASSES ARE NOW ENROLLING!

Join Raleigh Little Theatre in the new year for a variety of youth & adult classes! New & returning favorites include offerings for youth ages 2-18, Spring Break Camp for K-8th grade, and six-week sessions of theatre classes for adults.

Visit our website for more information!

REGISTER
HERE:



RaleighLittleTheatre.org/Education



919-821-4579 x 231



Education@RaleighLittleTheatre.org



RALEIGH LITTLE THEATRE
EDUCATION

Donors

ACTOR – \$100+

Natasha Gore
Maureen Grant
Joye Groff
Karyn Harrell^
Sherri Holmes
Derreth & John Kavanagh
The Kenny Family
Anthony Lewitt
Richard & Sara Loeppert
Linda Maloof
Allison Maney
Kenneth Marks
Amanda Matsov
Michael & Helen McGee
Allison Medlin
Molly Mersch
Kimberly Miles
Kathleen Milligan
Morrisa & Scott Nagel
Thomasina O’Neal
Lise Osvold and Robert Miller
J. Paumier & M. Gumpertz
Theresa Pennypacker-Moss
John Peters
Helen Petrovskaya

Donors

ACTOR – \$100+

Caitlin Poe

Rick & Cindy Puetzer

Dave Richard

Scott Schauer

Janet Schmitt

Saul Shapiro

Susan Sigmon

Freyja & Magnus Sindemark^

Windy Sipe Household

Marsha and Geoff Smith

Mandy Soltes

Antonio & Tammie Stagnitta

Cathy & Jim Stuart

Pam Swanstrom

Nicholas Thomas^

Rose Troyer

Helaine Turek

Mary Ann Turner

Larry Vack

Diane & Jeff Williams

David & Norma Zendels

Donald A. Ziff and Dorothy T. Manly

Donors

IN HONOR OF...

Kiran Baucom
Katie Bottomley
Bette Davis
Kathleen Milligan
Kathleen Rudolph
Natalie Turgeon
Michele Weathers

IN MEMORY OF...

Patsy M. Clarke
Joyce Davis
Haskell Fitz-Simons
Jack Hall
Larry Vack
Judiann Wilkinson
Jeff Wise

*These patrons support RLT and their employers
generously match their gifts.

^These patrons are RLT Sustainers and support
RLT with automatic recurring donations.

For more information about investing in RLT,
email Info@RaleighLittleTheatre.org or call 919-821-4579.

Autographs





RALEIGH
LITTLE
THEATRE

Little Theatre. Big Savings.

Our "Choose Your Own Series" subscription package is available all season long! Save big by seeing three of the remaining shows in our 25-26 season:

MOONLIGHT AND MAGNOLIAS

February 6 - 22, 2026

1776

March 27 - April 19, 2026

THE HOBBIT

May 2 - 10, 2026

SCHOOL OF ROCK

June 5 - 28, 2026

Subscriptions start at just \$54! Prices vary based on ticket type and shows selected. Visit **RaleighLittleTheatre.org/Subscriptions** or scan the QR code below to become a subscriber today!



Ticketing questions?

Contact BoxOffice@RaleighLittleTheatre.org
or call 919-821-3111, Wed-Fri from 12-4 PM.



**RALEIGH
LITTLE
THEATRE**

TICKETS: 919-821-3111

RaleighLittleTheatre.org



@RLT1936