



RALEIGH
LITTLE
THEATRE

DOUBT

A PARABLE



OCTOBER 18 - NOVEMBER 3

BY JOHN PATRICK SHANLEY



presents

DOUBT, A PARABLE

by John Patrick Shanley

Directed by Sean A. Brosnahan

Scenic Design by Sonya Leigh Drum

Costume Design by Elspeth McClanahan

Lighting Design by Joel Soren

Sound Design by Alex Thompson

Props Design by Elizabeth laquinta

Stage Management by Jeremy Vance

Originally produced by the Manhattan Theatre Club
on November 23, 2004.

Originally produced on Broadway by Carole Shorenstein Hays,
MTC Productions, Roger Berlind and Scott Rudin
on March 31, 2005.

DOUBT, A PARABLE is presented by special arrangement
with Broadway Licensing, LLC, servicing the
Dramatists Play Service collection. (www.dramatists.com)

**Any video and/or audio recording of this production
is strictly prohibited.**

Sponsors

Thanks to our media sponsor, [Walter Magazine](#)



This program is funded in part by the City of Raleigh based on recommendations of the Raleigh Arts Commission.



**Raleigh
Arts**

Doubt, A Parable is supported by the United Arts Council of Raleigh and Wake County, as well as the N.C. Arts Council, a division of the Department of Natural and Cultural Resources.



Special thanks to David Watts for website maintenance, Kristina Brunelle, Fr. Jay Woods, OFM, Bonnie Webster, and Darrin J. Pufall Purdy.

Like us on Facebook



@RLT1936

Follow us on X



@RLT1936

Follow us on Instagram



@RLT1936

Connecting People With the Arts

The City of Raleigh Arts Commission nurtures creativity and enriches our community by championing the arts in Raleigh:

- Partnering with local cultural organizations
- Supporting arts programming
- Advocating for arts investment
- Presenting art exhibitions, public art and special events

Vinculando al Pueblo con las Artes

La Comisión de Artes de la Ciudad de Raleigh sustenta la creatividad y enriquece a nuestra comunidad, favoreciendo las artes en Raleigh por medio de:

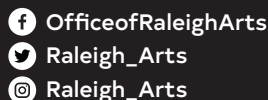
- La asociación con organizaciones culturales locales
- El apoyo de la programación de las artes
- El fomento de la inversión en el arte
- La presentación de exposiciones artísticas, arte público y eventos especiales

2023-2024

Raleigh Arts Partners

- African American Cultural Festival
- Animazement
- Arts Access
- Arts Together
- Artspace
- Artsposure
- Burning Coal Theatre Company
- CAM Raleigh
- Carolina Ballet
- Chamber Music Raleigh
- Community Music School
- Cultural Voice of NC
- Diamante Arts & Cultural Center
- El Pueblo
- The Justice Theater Project
- National Women's Theatre Festival
- The NC Chamber Music Institute
- NC Master Chorale
- NC Museum of History
- NC Opera
- NC State LIVE
- NC State University Theatre
- NC Symphony
- NC Theatre
- North Raleigh Arts & Creative Theatre
- Nuv Yug Cultural Organization
- Performance Edge
- PineCone
- Pure Life Theatre Company
- Raleigh Civic Symphony Association
- Raleigh Little Theatre
- The Raleigh Ringers
- Raleigh Youth Choir
- ShopSpace
- Theatre in the Park
- Theatre Raleigh
- Triangle Youth Music
- VAE Raleigh

raleighnc.gov/arts
919-996-3610



Raleigh
Arts

Hello and welcome to the Gaddy-Goodwin Theatre,

In John Patrick Shanley's Pulitzer Prize and Tony Award winning play set in the 1960's neighborhood of the Bronx, we are thrown into the moral dilemma of whether to believe an abhorrent accusation about someone or dismiss it with no evidence to help us decide either way. The currency of the time is of one debate and staunch defense of one's position - one steeped in established, traditional values and one in the counterculture movement which held different beliefs about those values. This play's characters mirror that tension and I would argue debate and defense take their fair share of stage time in our communities today.



By choosing this story, I hope we see one similar thing - uncertainty is a part of life. But I also hope we feel enlivened for conversation whether it's about Father Flynn's guilt or innocence or how we bridge the gray divides of our beliefs with respect and kindness.

This talented cast and crew, guided by Sean A. Brosnahan, spent six weeks making something relevant and emotional. Please enjoy the show and let us hear from you when the post-show survey comes to your inbox.

With gratitude

A handwritten signature in black ink that reads "Michele". The script is fluid and cursive, with a prominent loop at the end of the name.

Michele Weathers
Executive Producer

P.S. -

Up next...the 40th annual production of *Cinderella*: December 6 - 22, 2024

Program Notes

At its core, *Doubt, A Parable* is about what it means to allow ourselves to live in the gray spaces of life. What do we lose when we focus on arbitrating absolutes? Which are more defining: our actions or our beliefs? How can we be sure of anything when things are changing all around us?

Throughout *Doubt*, John Patrick Shanley explores these questions within the framework of perhaps one of the most lasting organizations of modern history, the Catholic Church. His play is positioned in 1964, a time where many things about the world, American culture, and Catholicism were changing. John F. Kennedy, the U.S.'s first Catholic President of the United States, had been assassinated only a year prior, leaving the U.S. reeling. His presidency marked an important entrance of Catholicism to the American mainstream and his death marked an entrance of fear and despair in the hearts of many Americans, now thrust out of their 50s-economic-boom-haze. Simultaneously, the civil rights movement had heightened to the point of a federal reckoning, resulting in the signing of the Civil Rights Act.

Across the Atlantic, the Catholic Church was undergoing its own makeover. The Second Vatican Council saw a convention of clergymen from the entire globe, meeting in Vatican City to rewrite the Catholic Constitution to make it more accessible to broader audiences. Among other changes, the Second Vatican Council allowed mass to be presented in English instead of Latin and allowed unordained community members to take on roles in mass such as acolytes or choir members. In this time, Catholic schools were also seeing their largest enrollment numbers due to the baby boom, with 5.6 million students nationwide and the student population was more diverse than ever. The play, which takes place in the Bronx, specifically East Tremont, was experiencing a large racial demographic shift. As "white-flight" began in the early 60s, areas like East Tremont became melting pots for dozens of different immigrant groups and African Americans.

In *Doubt*, these changes are hitting Sister Aloysius the hardest. Staunchly conservative and pious, Sister Aloysius, a member of the Sisters of Charity, reigns over her school with a conviction that stems from her many decades of service. Her character is juxtaposed by Father Flynn, a relatively new priest with big ideas about how to modernize the parish. *Doubt* often finds the two at odds, opening their interaction over a disagreement about the inclusion of "secular" Christmas music in their annual pageant. Ultimately, the play hinges on the two characters and

their opinions on tradition and their religious order. Interestingly, Father Flynn who is characterized as forward-thinking and modern, is the one who insists that Aloysius step back in line and obey the patriarchal hierarchy when she calls his alleged actions into question; meanwhile, Aloysius, who is shown to be among the most devout of nuns, is willing to forsake the entire church if it means getting an end to Flynn. It's in these revelations that Shanley reveals that even the most assured of us can have doubts.

In his writings and interviews, Shanley has pointed to several things that inspired him to write *Doubt*. In the preface of the 2004 literary edition of the play, Shanley writes about the pervasive "courtroom culture" that he began to see take over the national dialogue around the turn of the century. In this courtroom culture, we are forced to pick sides, advocate absolutely, and debate to the point of spoiling discussion. Shanley has also noted the Iraq war was a source of inspiration, citing President George W. Bush's unwavering and damaging belief in the existence of Iraqi weapons of mass destruction. Most evidently, he was inspired by the events uncovered by The Boston Globe in 2002.

In Boston, a priest named John Geoghan was tried and convicted of sexually abusing children in the parishes he had been charged to serve. It was an unspeakable act. A man with unquestionable, god-given authority, taking advantage of children who had been taught to revere and respect the clergy. Shanley himself had been a Catholic schoolboy in New York around the late 1960s and while he does not claim to have experiences similar to those victims, he is related to an alleged victim who came forward in the early 00s.

The significance of these events have no doubt weighed on audiences for twenty years, pondering, "Did Flynn do it? Was Aloysius right?" as they leave the theatre. Shanley often encourages audiences to not focus too much on what we think happened, but rather to focus on our own experiences as viewers: How did uncertainty feel? Did our beliefs hold us back from changing our mind? What did we gain when allowed ourselves to sit in doubt?

Emma Clements
Jack Hall Scholar
2024-2025

**WE SERVE
SCHOOLS**

**WE FUND ARTISTS &
ARTS ORGANIZATIONS**

**WE CREATE
COMMUNITY**



**UNITED
ARTS**
WAKE COUNTY

Building a better Wake
County through the
support of and
advocacy for the arts

This production was made possible
with support from United Arts.

unitedarts.org

Cast & Production Team

Cast

Sister Aloysius Beauvier

Rebecca Blum

Father Brendan Flynn

Kevin Varner

Sister James

Emily Levinstone

Mrs. Muller

Terri Crymes

Production Team

Director

Sean A. Brosnahan

Scenic Designer

Sonya Leigh Drum

Costume Designer

Elspeth McClanahan

Lighting Designer

Joel Soren

Sound Designer/Composer

Alex Thompson

Props Designer

Elizabeth Iaquinta

Production Manager/
Technical Director

Dennis R. Berfield

Costume Shop Manager

Jenny Mitchell

Intimacy Director

Veronica Dress

Assistant Technical Director

Ali Wood

Assistant Director

Terri Crymes

Stage Manager

Jeremy Vance

Assistant Stage Manager

Doc Price

Cast Biographies



REBECCA BLUM (Sister Aloysius) is excited to help bring this powerful story to life with a wonderful cast and crew! Having performed on various local stages since 1995, this is her fifth time on the Gaddy boards! Her most recent theatre performance was Judy in *The Curious Incident of the Dog in the Night-Time*. She is grateful to Seth, Atticus, Havana, Scarlett, and everyone who helped or cheered her on the past few months. Or ever. Much love!



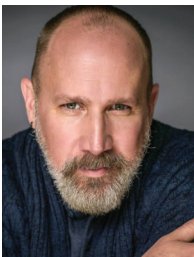
TERRI CRYMES (Mrs. Muller) is excited to be making her return to Raleigh Little Theatre in this unique and exciting production. She was most recently seen as Millie Davis in RLT's production of *Trouble in Mind*. Some of her favorite productions include *Little Shop of Horrors* (American Stage), *Vote* (Eckerd Theatre Company), and her one woman show for Chicago Fringe. Terri earned her BFA in Musical Theatre from the University of Central Florida. She would

like to thank this amazing cast and crew for their generosity, courage and support and love to her husband, Nick.



EMILY LEVINSTONE (Sister James) (she/her) is a Durham-based actor and musician. A classically-trained opera singer, she graduated from Duke in 2017, where she discovered her love for character acting, improv, and incorporating ukulele into theatrical productions. Most recently, Emily was seen in Blue Box Theatre Company's *Cyrano* (Roxane) and Stone Soup Theatre Company's *Romeo and Juliet* (Nurse). Other credits include *Parallel*

Lives (National Women's Theatre Festival), *Mr. Burns, a post-electric play* (Manbites Dog Theater), and *Ocean Filibuster* (PearlDamour). For J, J, & Blossom.



KEVIN VARNER (Father Flynn) Recent productions: *Grand Horizons* with Honest Pint Theatre Company; Theater in the Park's production of *Harold and Maude*; *Equus* with North Raleigh Arts and Creative Theater; and Raleigh Little Theatre's *Pride and Prejudice*. Past theater: *Tartuffe*, *Twelfth Night*, *Macbeth* and *The Rivals* with The Acting Company, Off-Broadway/National Tour; *Suddenly Last Summer* at Triad Stage; *Man and Superman*; and *The*

Bacchae at the American Repertory Theatre. Kevin sends his love to Jim for his support, love, excellent cooking, and help with learning lines.



marketing • print • signs
of Raeligh

Where business goes to grow.®
Your Complete Marketing and Printing
Services Provider



7209 Creedmoor Road, Suite 103 • Raleigh, NC 27613

Phone : 919.846.6000

customerservice@pip.com

www.piprdu.com

Production Team

Biographies

SEAN A. BROSNAHAN (Director) made his Raleigh Little Theatre debut almost exactly one year ago as the director of *Misery* and could not be more excited to be making a return trip as the director of *Doubt, A Parable*. Over the years, Sean has had the pleasure of working with a good deal of the incredible theatre companies in the Triangle, including Raleigh Ensemble Players, The Justice Theatre Project, Pure Life Theatre, Bare Theatre, Bulldog Ensemble Theatre, Theatre in the Park, Sweet Tea Shakespeare, Cary Players, Honest Pint, and Burning Coal. A few favorite past experiences local audiences might remember include Bulldog's production of *The Garbologists* (Danny); LGB's production of *One Flew Over the Cuckoo's Nest* (McMurphy); REP's productions of *Bent* (Horst), *Metamorphosis* (Orpheus), *Frozen* (Director), and *The Mercy Seat* (Director); JTP's productions of *The Grapes of Wrath* (Tom Joad) and *Home* (Director); Honest Pint's production of *The Night Alive* (Kenneth); and Bare Theatre's production of *Macbeth* (Macduff). Sean holds a BA in Theatre Arts from Catawba College, and is currently an At-Large member of NRACT's board of directors.

SONYA LEIGH DRUM (Scenic Designer) is a theatrical designer and arts educator based in Raleigh. For the past 25 years, Sonya has designed scenery for universities and theatre companies big and small. Recent regional collaborators include: The Duke Department of Theater Studies, Meredith College Theatre, Redbird Theatre Company, and Theatre Raleigh. Sonya is pleased to be working once again with Raleigh Little Theatre. *Doubt* will be her 7th production design at RLT. When not designing, Sonya works as a Magnet Visual Arts Specialist for the WCPSS.

ELSPETH MCCLANAHAN (Costume Designer) is thrilled to be working again with this artistic team. Some of her RLT credits include *Tempest*, *What We're Up Against*, *Into the Woods*, *Antigone*, *She Kills Monsters*, *Elephant and Piggie*, *Nate the Great*, *Misery*, and most recently *All Smiles*. She received her bachelor's in Theatre from Radford University. Her other credits include *Hair*, *La Cage aux Folles*, *Grease*, *Will Rogers Follies*, *Tommy*, *West Side Story*, *42nd Street*, and *Freakshow*. Special thanks to her family.

JOEL SOREN (Lighting Designer) is Raleigh local theatrical director, technical director, and stage designer. Joel is thrilled to return to Raleigh Little Theatre as a designer for the fourth time. He has also designed lighting, sound, costumes, projections, properties, puppets, and scenery for live performances in spaces ranging from inhabited studio apartments to the New York Hall of Science as well as off-Broadway and off-off Broadway in NYC. (BFA: NYU)

ALEX THOMPSON (Sound Designer/Composer) is a North Carolina-based music director, music producer and sound designer. He worked off-Broadway in 2019 and is the Musical Supervisor at Hope Repertory Theatre in Holland, Michigan. As a music producer, he has worked in a variety of genres including pop, hip-hop, rock, musical theatre and heavy metal, to name a few. He is a co-owner of BNB Audio in Chapel Hill, NC, and works as a freelance arranger, engineer and producer.

ELIZABETH IAQUINTA (Props Designer) is honored to be part of the talented and creative production team for *Doubt, A Parable*. Elizabeth has had the pleasure of working as prop designer for several past plays at Raleigh Little Theatre including *Misery*, *The Mountaintop*, *The Curious Incident of the Dog in the Night-Time* and *Blood Done Sign My Name*. A heartfelt thanks to the RLT community for this opportunity and for their support.

VERONICA DRESS (Intimacy Director) is thrilled to support *Doubt* as their intimacy director! Founder of The Dress Rehearsal, a sexuality coaching and intimacy direction and education practice, Veronica is passionate about creating consent-forward spaces where everyone can thrive. You can find her directing intimacy throughout the Triangle, with her most recent Raleigh Little Theatre productions including *Cinderella* and *Kinky Boots*. Thank you to the cast and team of *Doubt* for allowing her to join this incredible production!

Production Team Biographies

JEREMY VANCE (Stage Manager) is a stage manager local to the Raleigh area. They are excited to work with Raleigh Little Theatre once more on this perplexing production. Their previous credits at RLT include *Xanadu* with the Teens on Stage program and *Misery*. Other credits include *a great big woolly mammoth thawing from the ice* and *I and You* at Burning Coal Theatre, *We Are Proud to Present...* with Justice Theatre Project, and *Pride & Prejudice* and *Lady Day* with RhinoLeap Productions.

DOC PRICE (Assistant Stage Manager) is a new addition to the Raleigh Little Theatre family for the 24-25 season. Doc was an active member of the theatre community in Central Florida from childhood through college. He attended Daytona State College and was a member of the run crew and a scene shop assistant at Seaside Music Theatre in Daytona Beach. After a long hiatus, he is thrilled to be back in the theatre helping bring stories to life.

**TAKE
A BOW!**

Explore RLT's Youth & Adult Class offerings for **Fall 2024 - Spring 2025**, including brand new year-long classes for youth.

With classes available for all skill levels and from ages 2 - adult, there is truly something for everyone to try.

Head to our website to register now!



RALEIGH LITTLE THEATRE
EDUCATION



ARTS FOR ALL

Helping
to Create
Vibrant
Communities
Across
North
Carolina



Learn more at [NCArts.org](https://www.ncarts.org)



@ncartscouncil



@ncarts



North
Carolina
Arts
Council

Raleigh Little Theatre

Staff Biographies

MICHELE WEATHERS (Executive Producer) (she/her/hers) joined RLT in November 2023. Previously, she was the Executive Director and Senior Advisor at Carolina Ballet from 2017-2023. Other leadership experience includes positions at PlayMakers Repertory Company (UNC-Chapel Hill), Barrington Stage Company (Pittsfield, MA) and North Carolina Theatre (Raleigh, NC). NY credits include: *In the Heights*, *High Fidelity*, *Orson's Shadow*, and *Red Light Winter*. In 2019, she was recognized with TBJ's Women in Business Leadership Award and, in 2024, she was a member of the inaugural group of award winners for Raleigh Magazine's Impact 50. Professional development includes DEI training with artEquity. Michele is a member of the League of Professional Theatre Women and is a Theatre grant panelist for the NEA. Her daughter, Peyton Rose, is a senior at Enloe High School.

DENNIS R. BERFIELD (Production Manager/Technical Director) is from South Williamsport, Pennsylvania. He received degrees in Theater and Communication Studies at the Lock Haven University of Pennsylvania, and a Masters of Fine Arts in Scenic Design and Technology at the University of Massachusetts, Amherst. Dennis has worked at various regional and off-Broadway theaters as a Scenic Artist, Carpenter, Master Carpenter, Scenic Designer, Assistant Technical Director, and Scenic Coordinator. After working professionally for a number of years, Dennis became an adjunct professor at Millikin University in Decatur, IL, and went on to become the Technical Director at the University of Scranton in Pennsylvania.

TERRA HODGE (Director of Education) (she/her) is the Director of Education at Raleigh Little Theatre. She received her Bachelor of Arts degree in Theatre Education from North Carolina Central University and her Master of Arts degree in Media Arts from Long Island University, Brooklyn Campus. Prior to joining RLT, Terra was the Theatre Arts teacher for the past 13 years at Culbreth Middle School in Chapel Hill, North Carolina. She was named the 2017-2018 Culbreth Teacher of the Year and was named an Honor Teacher for Chapel Hill – Carrboro City Schools. Terra has worked as a teaching artist, actor, and director with many local theatre companies. She is the director of Agape Theatre Project's production of *Crowns* that was featured at this year's International Black Theatre Festival in Winston Salem, NC.

JENNY MITCHELL (Costume Shop Manager) is the Costume Shop Manager here at Raleigh Little Theatre. She is thankful to have such a dedicated group of volunteers and co-workers to work with on this, and every, production. Her most recent credits include: *Something Rotten!*, *Kinky Boots*, *Trouble in Mind*, *Curtains*, and *Junie B. Jones Is Not A Crook*.

MEGAN FARRELL (Marketing Manager) joined the Raleigh Little Theatre team in August 2019. She holds a Bachelor's Degree in Business Administration with a concentration in Marketing from North Carolina State University (Go Wolfpack!). Megan grew up a theater kid and loves getting to "play" on the admin side of the performing arts now as an adult. When she's not at the theatre, Megan is likely cheering on the Dodgers, daydreaming about Halloween, or watching Disney movies with her tiny best friend Emmie.

ALI WOOD (Assistant Technical Director) could be found both on-stage and backstage while she was growing up. From skits her grandfather wrote for church to performing at the local community theatre, Ali was always involved. However, during her college years, she found lighting and swapped over to the dark side. After graduating, Ali worked as an Entertainment Stage Technician for Walt Disney World and now she continues her career as the Assistant Technical Director here at Raleigh Little Theatre where she hopes to continue spreading the love and joy of theatre with everyone she meets.

KIRAN BAUCOM (Development Manager) was born and raised in Durham and is so happy to be back home working in the Triangle's thriving arts scene. She received a Bachelor of Arts in American Studies from Yale University, where she held various roles in campus theatre, film, comedy, and performance poetry spaces. As Development Manager, Kiran draws on her varied experiences in arts administration, grant management, and nonprofit fundraising. She looks forward to every opportunity to support the work of her brilliant coworkers and form ever-deeper connections with the entire RLT community.

Raleigh Little Theatre Staff Biographies

KRISTINA BRUNELLE (Group Dynamics Strategist) is an Organizational Strategist by day, guiding leaders and teams to greater effectiveness through purposeful discussions and activities that foster strong interpersonal connections. Her work helps smooth out the challenges that often arise in fast-paced, high-stakes environments while cultivating a stronger sense of community. By night, she's an avid theatre-goer, likely seated in a row near you. Grateful for this incredible cast and crew—here's to a truly spectacular performance. On with the show! IG: kbbrunelle

EMMA CLEMENTS (Jack Hall Scholar) is a local director and producer. They are very excited to be joining the RLT team for the 2024-2025 season as the Jack Hall Scholar! They recently graduated from UNC-CH, where they held several student leadership and production roles, including Executive Director of Production for Pauper Players' 2022-2023 season. Emma also serves as the Artistic Director for Boy With Box Theatre Company, a new small-budget theatre company in Chapel Hill.

MAGGIE GINA (Administrative Intern) is currently a sophomore at NC State majoring in Business Administration with a double minor in arts entrepreneurship and music performance. Since she first picked up a trumpet at age 9, she was immediately drawn to a world of music and creativity, helping her realize she needed the arts to be forever a part of her life! Maggie is very excited to be a part of RLT and is grateful for the chance to gain real-world experience in marketing/administration and see first hand what it means to bring a performance to life. When not in the theater, Maggie can usually be found spending time with friends and family, studying, or in and out of practice rooms.

★ Empire Eats ★

Restaurants!

We've been called a lot of things,
but ordinary isn't one of them



THE MECCA
RESTAURANT



Landmark
Tavern



empireeats.com

Season Crews & Volunteers

2024-2025 Auditions Crew Member

Amy Blackwell
Barbara Corbin
Catherine Lambe
Heather Shinpaugh

Linda Depo
Marie Berry
Michael Teleoglou
Tony Landavazo

2024-2025 Auditions Crew Coordinator

Marie Berry

2024-2025 Costume Shop Crew Members

Alana Williamson
Alyssa Sanders
Ann Haigler
Barbara Corbin
Betsy Boyd
Bonita McPherren
Catherine Lambe
Chantal Brown
Cynthia Ramos
Dillon Shorter
Eleanor Silver
Emerson Bulluck
Hannah Hudyncia
Heather Meadows
James Shaw
Jaye Bullock
Jay Mack
Julija Kolenceva

Kai Arroyo
Kathy Mauney
Kelley O'Byrne
Laurel Drobits
Leanne Richbourg
Liz Houde
Mallory Koerner
Mallory Schultz
Millie Bozek
Ruth Berry
Sam Frigerio
Samuel Geist
Shannon Hahn
Sofia Albahrawy
Stephanie Lu
Stephanie Toney
Susanna Edwards

For more information about volunteering at RLT,
contact Cari by email at Cari@RaleighLittleTheatre.org
or via telephone at 919-821-4579 x232.

2024-2025 Lighting Crew Members

Anakin Ducheneaux
Barbara Corbin
Beth Kirby
Bob Tomasulo
Chantal Brown
Chantea England

Maggie Brown
Ryan Jones
Shruti Chavan
Tom Normanly
Violet Hellmers

2024-2025 Props Crew Supervisor

Catherine Lambe

2024-2025 Props Crew Members

Catherine Lambe
Chloe Allen
Doc Price
Joss Kagarise
Michael Teleoglou

Simone Pohlman
Sofia Albahrawy
Sophie Thibodeaux
Violet Hellmers
Yusha Bey

2024-2025 Scene Shop Crew Members

Alephie White
Alanya Campbell
Alison Thompson
Andrew Black
Bob Tomasulo
Don Miller
Dustin Bowles
Elaine Petrone
Eric Jensen
Graham Guzynski
Heath Roberts

Heidi Fleming
Jay Mack
Katherine Shauger
Raymond Siminski
Samantha Gallup
Samuel Hill
Sheridan Cooke
Shiri Dayan
Sonya Fleming
Stephen Furs
Yusha Bey

2024-2025 Sound Crew Members

Logan MacDonald
Paisley McIntyre

Rachel Ward
Tom Normanly

Season Crews & Volunteers

2024-2025 Deck Crew Members

Alex Gromo

Amy Keyworth

Anakin Ducheneaux

Bri Flynn

Doc Price

Dustin Bowles

Essie Horne

Heidi Fleming

Michael Parrill

Ray Siminski

Ryan Jones

Samantha Gallup

Shiri Dayan

Sonya Fleming

Tony Landavazo

Valeria Albahrawy

2024-2025 Dresser Crew Supervisor

Beth Castle

2024-2025 Dresser Crew Members

Beth Castle

Dillon Shorter

Essie Horne

Helen Remington

Jennifer Dai

Kendra Drylie

Lindsey Wyatt

Marie Berry

Petra Crowe

Sophie Thibodeaux

2024-2025 Fly Crew Members

Bri Flynn

Doc Price

Heidi Fleming

Ray Siminski

Shiri Dayan

Simone Pohlman

Tony Landavazo



4351 The Circle at North Hills
Raleigh, NC 27609
919.856.0604 - edibleartnc.com

2024-25

Board of Directors

Natasha Gore (President)

Steve Epstein (Vice President)

Clifton M. Cates III (Treasurer)

Rudra Dutta (Secretary)

Chanda Branch

Gene Cordon

Judy M. Dove

Barbette Hunter

Diana Hurtado

Leslie Ann Jackson

Safiyah Jackson

Betsy Ludwig

Amelia Lumpkin

Carol Machuca

Waltey Rasulala

Marquita Robertson

Suzanne Ruggles

Phillip Bernard Smith

Haley Tury

Victoria Wheeler

Michael Dunavan (Volunteer Rep)

Caitlin Poe (Board Attorney)

Raleigh Little Theatre Staff

Executive Producer

Michele Weathers

Production Manager/
Technical Director

Dennis R. Berfield

Director of Education

Terra Hodge

Costume Shop Manager/
Resident Costume Designer

Jenny Mitchell

Development Manager

Kiran Baucom

Marketing Manager

Megan Farrell

Assistant Technical Director

Ali Wood

Box Office &
Front of House Supervisor

Sawyer Shafer

Box Office Associates

**Jackson Griffin
Joel Schaer
Morgan Harris
Nic Johnson**

Jack Hall Scholar

Emma Clements

Administrative Intern

Maggie Gina

Donors

1936 Legacy Society

Anonymous

Carlie Huberman

Velvet Rattelade

Clifford & Janet Raynor

Leigh Ann Wilder and John B. Holding

Donald & Bonita Scott

David & Judi Wilkinson

Simon & Claudia Kaplan

Charles W. Burton, Jr.

Raleigh Little Theatre is grateful to the following individuals, companies and private and public funding agencies that have invested in live, community theatre and arts education. This list reflects gifts to the general needs of the theatre of \$100 or more between September 24, 2023 - September 24, 2024.



**RALEIGH
LITTLE
THEATRE**

Corporate Partners

Capitol Broadcasting Company/WRAL-TV5

Coastal Credit Union

North State Bank

Principled Technologies

Triangle Family Magazine

WALTER Magazine

Foundation and Government Partners

Capital City Civitan Club

**Charles W. Gaddy and Lucy Finch Gaddy Endowment
Fund, a component fund of the North Carolina
Community Foundation**

City of Raleigh Arts Commission

John Rex Endowment

John William Pope Foundation

Mary Duke Biddle Foundation

North Carolina Arts Council

The W. Trent Ragland Foundation

The Warner Fund

United Arts Council of Raleigh & Wake County

United Way of the Greater Triangle

Fitz-Simons

Alec and Georgia Donaldson^

Amy & John Bason^

Cece & Peter Scott

Chancy & Keith Kapp

Chuck & Nancy Crew

Jesse R. Gephart

John Adams

Kathy Mauney^

Mike & Maggie McGee*^

Mindtracs

Peter & Nancy Watkins Dimitrios*

Rick LaBach

Rosemary and Smedes York

Ruth Bromer & Joseph Huberman

Shelley Crisp

Zoe Watts, Kiron Rakkar & David Watts*

Producer

Amelia Lumpkin Household*

Catherine V. Lambe

Charles & Cheryl Hall

Clifford & Janet Raynor^

Clifton Cates

Daniel Hall

David and Carol Carlson

David, Elaine & Alyssa Petrone*

Jean Gross & Don Miller^

Jeff Kochuk*^

Jeff Woodhead & Beth Stewart

John Nelson

Producer

Kathleen Curie Hall
Leslie Ann Jackson
Mallory Schultz Household
Michele McCoy
Phyllis Parish & Seab Howard
Robert & Connie Shertz
Roy and Kristin Cooper
Scott Falmlen & Paul Fox

Director

Alan Hymowitz & Olivia Fried
Alison Bailey
Anonymous
April Grossi
Bill Brown
Bonnie & Don Scott
Cathy & Jim Stuart
Dave and Linda Bjerke
Freyja & Magnus Sindemark^
Hillary Hebert
Jeffrey Hooper
Kathleen Burkett^
Mary, Bill & Craig Stelzenmuller*
Meredith Howland
Neeraj Saraiya
Ruth Freeman

Designer

Andrea Nixon
Antonio & Tammie Stagnitta
Barbara Corbin
Benji Jones^
Charles J. Phaneuf
Charlotte & Brian Sweeney
Cynthia Urquhart
Elizabeth Armbruster
Gene Jones^
Helen Poole
Jenny Anglum
John Riedy
Jonathan Todd
Joyce Rothchild^

Michele Weathers &
Peyton Smith
Natasha Gore
Nicholas Thomas
Phyllis Bennett
Rebecca Crosson
Rob Maddrey &
Mark Tulbert
Rudra Dutta^
Susan Jill Diaz Household
Suzanne Ruggles
Tana Shehan^
Terry Haggerty^
Tony & Elli Gemma

Actor

Agrawal Household
Allison Maney
Amanda Yentsch Household
Amy Blackwell^
Amy Flynn & Phil Crone
Ann Wooten
Barbara Suelke
Barbette Hunter
Bill & Cathy Rodgers
Bill & Sandra Boyd
Bob & Linda Cyrus
Cecil Winslow
Christine & Charles Wagner
David & Norma Zendels

Debbie & Larry Robbins
Debra Beachy
Derreth & John Kavanagh
Diane & Jeff Williams
Donald Teeter
Elizabeth Cottingham
Elizabeth White
Ellen & Larry Goode
Erin Debnam^
Floyd Family Foundation
Gil & Mel Pena
Grossi Household
Hersey Forehand
Holiday Childs

* These patrons support RLT and their employers generously match their gifts.

Actor

J. Paumier & M. Gumpertz
Jaclyn Einstein
Jaime Askew
Janet Black Household
Jeanette Jackson^
Jenna Reese
Jennifer Bryant
Jim & Carolyn Hammerle
John & Jackie Phelps
Joy Walter^
Joye Groff
Judy & Kent Dove
Karen & Brooks Malone
Karen Guth
Kathleen Milligan
Kay & Lynda Mowery*
Kenneth Marks
Lee & Sunny Allen
Linda George
Linda Horstman
Lisa & Ray Behrens
Lise Osvold & Robert Miller
Marcia Sofley
Martha & Bill Lamb
Martha Keravuori
Mary Rowland^
Mary Tate
Matthew Margolis
Maureen Grant
Michael & Helen McGee
Michael McKinney
Michahla Vassey Household
Michelle & Charles
Putterman^
Michelle Bamford
Natalie Cooper
Renee Crowson
Robert Johnson Household
Robert Napier
Rose Troyer
Ruth Gross & Hans Kellner
Safiyah Jackson
Sandra Deutsch Crane^
Sandra Watson^
Steve & Martha Derbyshire
Steve Pysnik
Susan Sigmon
Suzanne Chaploney
Teresa & Charles Cramer
The Kenny Family
Thomas C Worth Jr
Thomasina O'Neal
Tiffany Hays
Tom & Peggy Eifler*
Tracy Abercrombie
Household
William Gilkeson^
Windy Sipe Household

^ These patrons are RLT Sustainers and support RLT with automatic recurring donation.

In honor of...

Bunny Safron

Grayson Scheatzle

Kathy and David Bartlett

Michele Weathers

Our amazing and dedicated volunteers!

Stephen Furs

The Donaldsons

In memory of...

Andrew Ingram

Charlie Hart

Elizabeth Grimes Droessler

Emily Steinhoff

John T. Hall III

Judi Miller Wilkinson

Linda Bamford

Linda O'Day Young

Sharon Pigott LaBach

Stan Paskoff

For more information about
investing in RLT, contact Kiran Baucom
by email at Kiran@RaleighLittleTheatre.org
or via telephone at 919-821-4579 x230.



@gumbyspizzahouse

Earn Free Food with Loyalty Points!

— Order directly from us at —
gumbysraleigh.com

Save 15% on your next order!
Use code **"gumbysvip"** at checkout
Valid till December 31, 2024



Order at gumbysraleigh.com for



Best Price



Fastest Service



Save Money



Earn Free Food
(via Loyalty Points)

PICKUP & DELIVERY

“Nothing could be finer.”
- Sir Walter Raleigh

SUBSCRIBE
TODAY



12

ISSUES PER YEAR

1 YEAR \$36

2 YEARS \$60

3 YEARS \$80



RALEIGH
LITTLE
THEATRE

Cinderella

DECEMBER 6-22



BASED ON THE FAIRY TALE BY **CHARLES PERRAULT**

ADAPTATION AND LYRICS BY **JIM EILER**

MUSIC BY **JIM EILER** AND **JEANNE BARGY**



919-821-3111
RaleighLittleTheatre.org

THE 2024-2025 SEASON





**RALEIGH
LITTLE
THEATRE**

TICKETS: 919-821-3111
RaleighLittleTheatre.org



@RLT1936