



**RALEIGH
LITTLE
THEATRE**

A Guide to Accessing the Campus of **Raleigh Little Theatre**



**Here's a guide for when you visit
Raleigh Little Theatre!**

Parking is available in the main parking lot on Pogue Street, including wheelchair accessible parking. There are handicap accessible ramps and walkways from the main parking lot to each of our theatre spaces.



Parking is also available in the neighborhood near the theatre, where there is plenty of street parking.

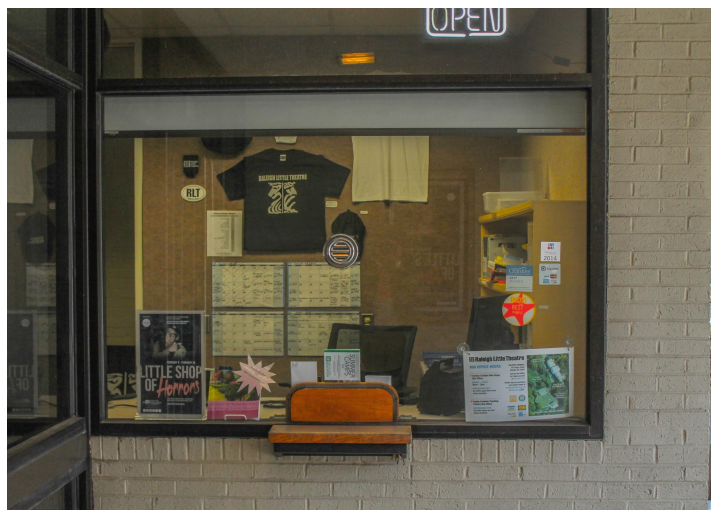


Cantey V. Sutton Theatre and Box Office

From the main parking lot, you can go up the ramp towards the Sutton Theatre lobby.



Another entrance to the Sutton Theatre lobby faces Pogue Street near the intersection of Stafford Avenue. This is where the box office is located.



If you parked on the street, you might be closer to the Sutton Theatre entrance near the box office. This is also where you can drop people off closer to the door if needed.



Both doors lead to the Sutton Theatre lobby, so you can enter through either one.



When entering the Sutton lobby, there are wheelchair-accessible bathrooms and chairs and benches to sit in while you wait to go into the theatre.



You will go through a smaller lobby area, and then go through a door to the right or the left to find your seats for the performance.



Gaddy-Goodwin Teaching Theatre

If you parked in the main parking lot, you will go down the sidewalk along Pogue street to the Gaddy-Goodwin Theatre entrance. It should take about three minutes to get there.



Additional accessible parking may be available in front of the loading dock between the Sutton and Gaddy-Goodwin Theatres on Pogue Street (for Gaddy-Goodwin shows only).



If you parked on the street, you might be closer to the Gaddy-Goodwin Theatre entrance. This is also where you can drop people off closer to the door if needed.



There is a ramp to the left of the porch and stairs on the right leading up to the theatre entrance.



For performances in the Gaddy-Goodwin Theatre, there is a box office counter inside where an associate will help you.



When entering the lobby, there are wheelchair-accessible bathrooms and places to sit while you wait to go into the theatre.



You can choose to turn right or left to enter the theatre space. You get to choose where you sit. This theatre has seats on different sides of the space and the stage is the area in the middle.



Scottie Stephenson Amphitheatre

The Scottie Stephenson Amphitheatre is accessible from the main parking lot. This is an outdoor theatre, and you need to bring your own blankets, chairs, or cushions if you want them.



Restrooms are located in the lobby of the Sutton Theatre. There are steps from the amphitheatre or you can use the ramp through the parking lot to get there.



The restroom doors look like this:



Wheelchair accessible seating is located in two places:
First, the back of the seating area, accessed by a ramp from the
main parking lot.



The other choice for wheelchair seating is close to the stage.



Drop off for this location is accessible via the smaller parking lot entrance on Pogue Street across from Everett Street. There is also a wheelchair accessible porta john at this entrance.



Business Office, Costume Shop, and Stage Door

From the main parking lot or street parking, the business office and stage door entrances can be accessed via the stairs at the back of the building (to the left of the Sutton lobby entrance) or via the service road off Pogue Street across from Everett Street.



The business office and stage door entrances face the Raleigh Rose Garden. The costume shop is accessible from the business office entrance.



A wheelchair accessible ramp to these areas is accessible via the service road off Pogue Street across from Everett Street. The ramp is located next to the palm trees, with the double door entrance under the green awning.

Please call 919-821-4579 to coordinate wheelchair accessible entry to the business office, costume shop, or stage door areas.



Scene Shop

The scene shop entrance is via the loading dock along Pogue street between the Sutton and Gaddy-Goodwin Theatres.



Raleigh Rose Garden



The Raleigh Rose Garden is located behind the main theatre building with direct entrances from the amphitheatre and Pogue Street.

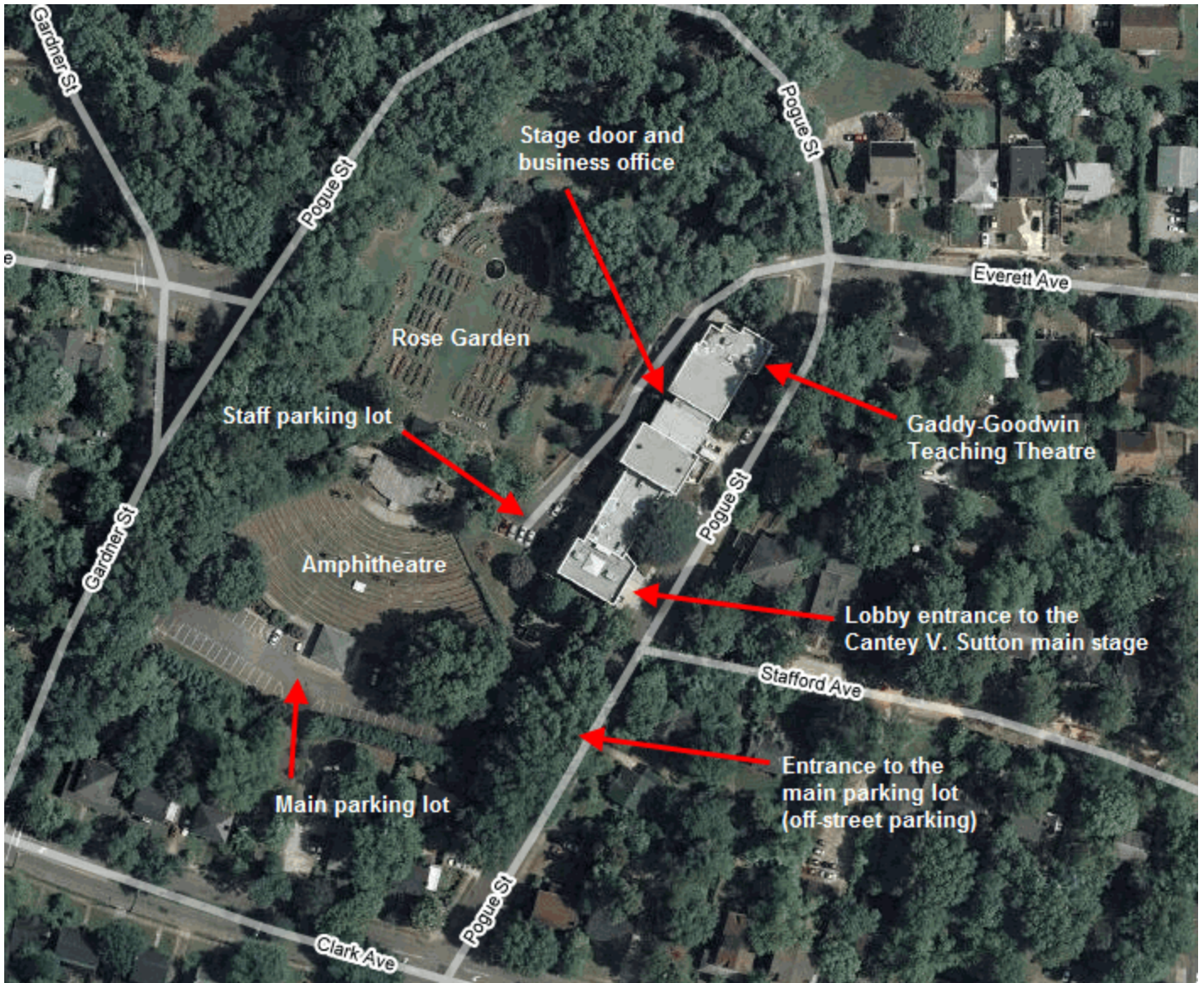




Street parking is available along Pogue Street. Two spaces for cars with disability placards are located next to the garden via the service road off Pogue Street across from Everett Street.



Finally, here's an aerial view of the RLT campus.



We hope you enjoy your visit to Raleigh Little Theatre!



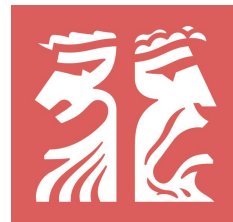
About Raleigh Little Theatre

RLT is a welcoming community using theatre to enrich, educate, entertain and engage volunteers, students and audiences of all ages. RLT values everyone's story. As an organization, we intentionally create a welcoming environment through a long-term, holistic approach to inclusion and diversity. We commit ourselves to actively seeking out perspectives that are not our own, encouraging learning, growth, and cultural awareness, engaging community conversations, and embracing conflict as a force for change.

Questions?

Contact our business office at
919-821-4579

info@raleighlittletheatre.org



**RALEIGH
LITTLE
THEATRE**